

Product datasheet for **TA342685**

RAB4B Rabbit Polyclonal Antibody

Product data:

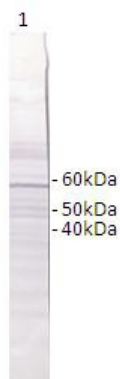
Product Type:	Primary Antibodies
Recommended Dilution:	WB
Reactivity:	Human, Mouse, Pig, Dog, Horse, Zebrafish, Brugia malayi
Host:	Rabbit
Isotype:	IgG
Clonality:	Polyclonal
Immunogen:	The immunogen for anti-RAB4B antibody is: synthetic peptide directed towards the middle region of Human RAB4B. Synthetic peptide located within the following region: SPNIVILCGNKKDLDPEREVTFLEASRFAQENELMFLETSALTGENVEE
Formulation:	Liquid. Purified antibody supplied in 1x PBS buffer with 0.09% (w/v) sodium azide and 2% sucrose. <i>Note that this product is shipped as lyophilized powder to China customers.</i>
Purification:	Affinity Purified
Conjugation:	Unconjugated
Storage:	Store at -20°C as received.
Stability:	Stable for 12 months from date of receipt.
Predicted Protein Size:	23 kDa
Gene Name:	RAB4B, member RAS oncogene family
Database Link:	NP_057238 Entrez Gene 19342 Mouse Entrez Gene 403956 Dog Entrez Gene 53916 Human P61018
Background:	RAB proteins, such as RAB4B, are members of the RAS superfamily of small GTPases that are involved in vesicular trafficking.
Synonyms:	FLJ78649; MGC52123
Note:	Immunogen Sequence Homology: Dog: 100%; Pig: 100%; Rat: 100%; Horse: 100%; Human: 100%; Mouse: 100%; Zebrafish: 100%; Goat: 93%; Sheep: 93%; Bovine: 93%; Guinea pig: 93%; Rabbit: 86%
Protein Families:	Druggable Genome



[View online »](#)

Product images:

RAB4A



Lanes:

Lane 1: 20ug of Brugia malayi total worm extract

Primary Antibody Dilution:

1:1000

Secondary Antibody:

Anti-rabbit-HRP

Secondary Antibody Dilution:

1:5000

Gene Name:

RAB4A

Submitted by:

Peter U. Fischer, Washington University School of Medicine