

Product datasheet for TA342683

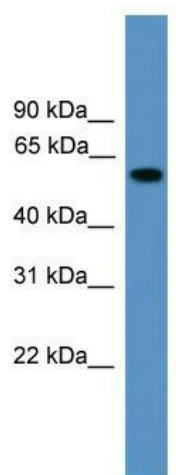
RAP1GDS1 Rabbit Polyclonal Antibody

Product data:

Product Type:	Primary Antibodies
Applications:	WB
Recommended Dilution:	WB
Reactivity:	Human
Host:	Rabbit
Isotype:	IgG
Clonality:	Polyclonal
Immunogen:	The immunogen for anti-RAP1GDS1 antibody: synthetic peptide directed towards the middle region of human RAP1GDS1. Synthetic peptide located within the following region: LLEIVQKQVDSKDIEDITELKTGSDLMVLLLLGDESMQKLFEGGKGSVFQ
Formulation:	Liquid. Purified antibody supplied in 1x PBS buffer with 0.09% (w/v) sodium azide and 2% sucrose.
Conjugation:	Unconjugated
Storage:	Store at -20°C as received.
Stability:	Stable for 12 months from date of receipt.
Predicted Protein Size:	61 kDa
Gene Name:	Rap1 GTPase-GDP dissociation stimulator 1
Database Link:	NP_001093899 Entrez Gene 5910 Human P52306
Background:	The smg GDP dissociation stimulator (smgGDS) protein is a stimulatory GDP/GTP exchange protein with GTPase activity (Riess et al., 1993 [PubMed 8262526]).
Synonyms:	GDS1; SmgGDS
Note:	Immunogen Sequence Homology: Human: 100%; Dog: 93%; Horse: 93%; Rabbit: 93%; Pig: 86%; Rat: 86%; Bovine: 86%; Mouse: 79%; Guinea pig: 79%


[View online »](#)

Product images:



WB Suggested Anti-RAP1GDS1 Antibody;
Titration: 1.0 ug/ml; Positive Control: Placenta

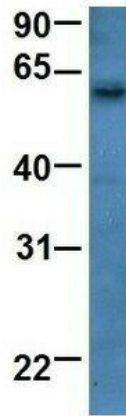
RAP1GDS1



Rabbit Anti-RAP1GDS1
Sample Type: Human Fetal
Brain
Antibody Concentration: 1ug/mL

Host: Rabbit; Target Name: RAP1GDS1; Sample
Tissue: Human Fetal Brain; Antibody Dilution: 1.0
ug/ml

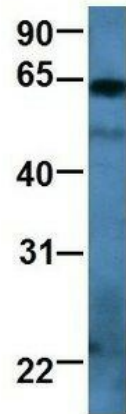
RAP1GDS1



Rabbit Anti-RAP1GDS1
Sample Type: Human Fetal Heart
Antibody Concentration: 1ug/mL

Host: Rabbit; Target Name: RAP1GDS1; Sample Tissue: Human Fetal Heart; Antibody Dilution: 1.0 ug/ml

RAP1GDS1



Rabbit Anti-RAP1GDS1
Sample Type: Human Jurkat
Antibody Concentration: 1ug/mL

Host: Rabbit; Target Name: RAP1GDS1; Sample Tissue: Human Jurkat; Antibody Dilution: 1.0 ug/ml RAP1GDS1 is strongly supported by BioGPS gene expression data to be expressed in Human Jurkat cells