

Product datasheet for **TA342682**

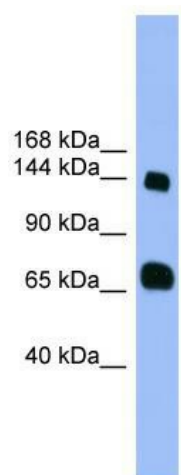
PLEKHG2 Rabbit Polyclonal Antibody

Product data:

Product Type:	Primary Antibodies
Applications:	WB
Recommended Dilution:	WB
Reactivity:	Human
Host:	Rabbit
Isotype:	IgG
Clonality:	Polyclonal
Immunogen:	The immunogen for anti-PLEKHG2 antibody: synthetic peptide directed towards the middle region of human PLEKHG2. Synthetic peptide located within the following region: DLTIPKHRHLLQAKNQEEKRLWIHCLQLFFENHPASIPAKAKQVLENS
Formulation:	Liquid. Purified antibody supplied in 1x PBS buffer with 0.09% (w/v) sodium azide and 2% sucrose.
Conjugation:	Unconjugated
Storage:	Store at -20°C as received.
Stability:	Stable for 12 months from date of receipt.
Predicted Protein Size:	144 kDa
Gene Name:	pleckstrin homology and RhoGEF domain containing G2
Database Link:	NP_073746 Entrez Gene 64857 Human Q9H7P9
Background:	PLEKHG2 may be a transforming oncogene with exchange activity for CDC42. PLEKHG2 may be a guanine-nucleotide exchange factor (GEF) for RAC1 and CDC42. PLEKHG2 activated by the binding to subunits beta and gamma of the heterotrimeric guanine nucleotide-binding protein (G protein).
Synonyms:	ARHGEF42; CLG; LDAMD
Note:	Immunogen Sequence Homology: Dog: 100%; Pig: 100%; Human: 100%; Zebrafish: 100%; Guinea pig: 100%; Rat: 93%; Mouse: 93%; Bovine: 93%; Rabbit: 93%


[View online »](#)

Product images:



WB Suggested Anti-PLEKHG2 Antibody; Titration:
1.0 ug/ml; Positive Control: Fetal Heart