

Product datasheet for **TA342680**

GPR172B (SLC52A1) Rabbit Polyclonal Antibody

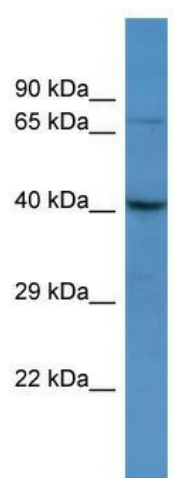
Product data:

Product Type:	Primary Antibodies
Applications:	WB
Recommended Dilution:	WB
Reactivity:	Human
Host:	Rabbit
Isotype:	IgG
Clonality:	Polyclonal
Immunogen:	The immunogen for anti-SLC52A1 antibody is: synthetic peptide directed towards the C-terminal region of Human SLC52A1. Synthetic peptide located within the following region: SLPSVTTGGSGPELQLGSPGAEKEEKEEALPLQEPSSQAAGTIPGDPD
Formulation:	Liquid. Purified antibody supplied in 1x PBS buffer with 0.09% (w/v) sodium azide and 2% sucrose. <i>Note that this product is shipped as lyophilized powder to China customers.</i>
Purification:	Affinity Purified
Conjugation:	Unconjugated
Storage:	Store at -20°C as received.
Stability:	Stable for 12 months from date of receipt.
Predicted Protein Size:	38 kDa
Gene Name:	solute carrier family 52 member 1
Database Link:	NP_001098047 Entrez Gene 55065 Human Q9NWF4
Background:	The function of this protein remains unknown.
Synonyms:	GPCR42; GPR172B; hRFT1; PAR2; RBFVD; RFT1; RFVT1
Note:	Immunogen Sequence Homology: Human: 100%; Pig: 93%; Horse: 93%; Bovine: 86%; Guinea pig: 86%; Rat: 85%; Mouse: 85%; Dog: 79%
Protein Families:	Druggable Genome, GPCR, Transmembrane



[View online »](#)

Product images:



Host: Rabbit; Target Name: SLC52A1; Sample
Tissue: HepG2 Whole Cell lysates; Antibody
Dilution: 1.0 ug/ml