

Product datasheet for **TA342679**

Calcitonin receptor (CALCR) Rabbit Polyclonal Antibody

Product data:

Product Type:	Primary Antibodies
Applications:	WB
Recommended Dilution:	WB
Reactivity:	Human
Host:	Rabbit
Isotype:	IgG
Clonality:	Polyclonal
Immunogen:	The immunogen for anti-CALCR antibody: synthetic peptide directed towards the C terminal of human CALCR. Synthetic peptide located within the following region: NQRWGRRPSNRSARAAAAAAEAGDIPIYICHQELRNEPANNQGEESAEII
Formulation:	Liquid. Purified antibody supplied in 1x PBS buffer with 0.09% (w/v) sodium azide and 2% sucrose. <i>Note that this product is shipped as lyophilized powder to China customers.</i>
Conjugation:	Unconjugated
Storage:	Store at -20°C as received.
Stability:	Stable for 12 months from date of receipt.
Predicted Protein Size:	52 kDa
Gene Name:	calcitonin receptor
Database Link:	NP_001733 Entrez Gene 799 Human P30988
Background:	This gene encodes a high affinity receptor for the peptide hormone calcitonin and belongs to a subfamily of seven transmembrane-spanning G protein-coupled receptors. The encoded protein is involved in maintaining calcium homeostasis and in regulating osteoclast-mediated bone resorption. Polymorphisms in this gene have been associated with variations in bone mineral density and onset of osteoporosis. Alternate splicing results in multiple transcript variants.
Synonyms:	CRT; CT-R; CTR; CTR1



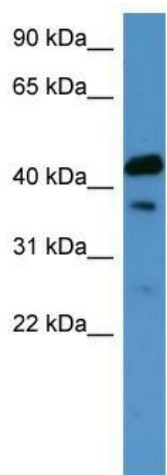
[View online »](#)

Note: Immunogen Sequence Homology: Human: 100%; Dog: 79%; Pig: 79%; Guinea pig: 79%; Bovine

Protein Families: Druggable Genome, GPCR, Transmembrane

Protein Pathways: Neuroactive ligand-receptor interaction

Product images:



WB Suggested Anti-CALCR Antibody Titration: 0.2-1 ug/ml; ELISA Titer: 1:1562500; Positive Control: Human kidney