

Product datasheet for **TA342672**

ARMET (MANF) Rabbit Polyclonal Antibody

Product data:

Product Type:	Primary Antibodies
Applications:	WB
Recommended Dilution:	WB
Reactivity:	Human
Host:	Rabbit
Isotype:	IgG
Clonality:	Polyclonal
Immunogen:	The immunogen for anti-MANF antibody: synthetic peptide directed towards the C terminal of human MANF. Synthetic peptide located within the following region: EKICEKLVKKKDSQICELKYDKQIDLSTVDLKKLRVKELKKILDDWGETCK
Formulation:	Liquid. Purified antibody supplied in 1x PBS buffer with 0.09% (w/v) sodium azide and 2% sucrose. <i>Note that this product is shipped as lyophilized powder to China customers.</i>
Conjugation:	Unconjugated
Storage:	Store at -20°C as received.
Stability:	Stable for 12 months from date of receipt.
Predicted Protein Size:	21 kDa
Gene Name:	mesencephalic astrocyte derived neurotrophic factor
Database Link:	NP_006001 Entrez Gene 7873 Human P55145
Background:	MANF is localized in the endoplasmic reticulum (ER) and golgi, and is also secreted. Reducing expression of MANF gene increases susceptibility to ER stress-induced death and promotes cell proliferation. The protein was initially thought to be longer at the N-terminus and to contain an arginine-rich region but transcribed evidence indicates a smaller open reading frame that does not encode the arginine tract. The presence of polymorphisms in the arginine-rich region, including a specific mutation that changes the previously numbered codon 50 from ATG to AGG, have been reported in a variety of solid tumors; however, these polymorphisms were later shown to exist in normal tissues and are thus not tumor-related.



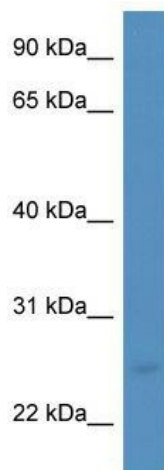
[View online »](#)

Synonyms: ARMET; ARP

Note: Immunogen Sequence Homology: Pig: 100%; Rat: 100%; Horse: 100%; Human: 100%; Mouse: 100%; Bovine: 100%; Rabbit: 100%; Zebrafish: 100%; Guinea pig: 100%; Dog: 93%

Protein Families: Druggable Genome, Secreted Protein

Product images:



WB Suggested Anti-MANF Antibody Titration: 0.2-1 ug/ml; ELISA Titer: 1:312500; Positive Control: HCT15 cell lysate MANF is supported by BioGPS gene expression data to be expressed in HCT15