

Product datasheet for **TA342671**

PCB (PC) Rabbit Polyclonal Antibody

Product data:

Product Type:	Primary Antibodies
Applications:	WB
Recommended Dilution:	WB
Reactivity:	Human
Host:	Rabbit
Isotype:	IgG
Clonality:	Polyclonal
Immunogen:	The immunogen for anti-PC antibody: synthetic peptide directed towards the C terminal of human PC. Synthetic peptide located within the following region: SLPPLDLQALEKELVDRHGEEVTPEDVLSAAMYPDVFAHFKDFATFGPL
Formulation:	Liquid. Purified antibody supplied in 1x PBS buffer with 0.09% (w/v) sodium azide and 2% sucrose. <i>Note that this product is shipped as lyophilized powder to China customers.</i>
Conjugation:	Unconjugated
Storage:	Store at -20°C as received.
Stability:	Stable for 12 months from date of receipt.
Predicted Protein Size:	127 kDa
Gene Name:	pyruvate carboxylase
Database Link:	NP_001035806 Entrez Gene 5091 Human P11498

Background: This gene encodes pyruvate carboxylase, which requires biotin and ATP to catalyse the carboxylation of pyruvate to oxaloacetate. The active enzyme is a homotetramer arranged in a tetrahedron which is located exclusively in the mitochondrial matrix. Pyruvate carboxylase is involved in gluconeogenesis, lipogenesis, insulin secretion and synthesis of the neurotransmitter glutamate. Mutations in this gene have been associated with pyruvate carboxylase deficiency. Alternatively spliced transcript variants with different 5' UTRs, but encoding the same protein, have been found for this gene.



[View online »](#)

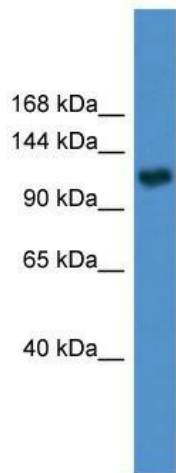
Synonyms: PCB

Note: Immunogen Sequence Homology: Human: 100%; Dog: 86%; Pig: 86%; Rat: 86%; Horse: 86%; Mouse: 86%; Bovine: 86%; Guinea pig: 79%

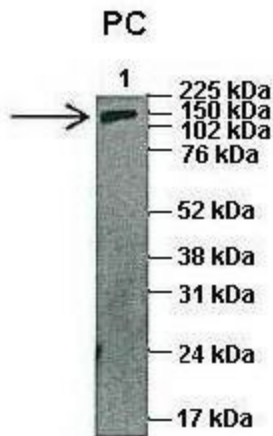
Protein Families: Druggable Genome

Protein Pathways: Citrate cycle (TCA cycle), Metabolic pathways, Pyruvate metabolism

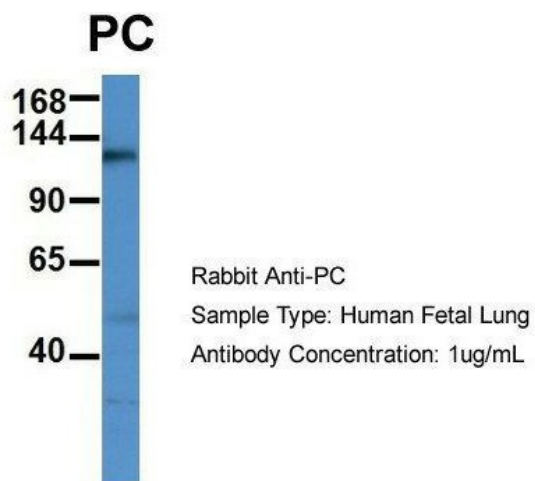
Product images:



WB Suggested Anti-PC Antibody Titration: 0.2-1 ug/ml; ELISA Titer: 1:312500; Positive Control: Human Liver



Lanes: 1: 45ug human capan1 cell lysate; Primary Antibody Dilution: 1:1000; Secondary Antibody: Anti-rabbit HRP; Secondary Antibody Dilution: 1:5000; Gene Name: PC; Submitted by: Dr. Pankaj Kumar Singh, UNMC, Omaha, NE;



Host: Rabbit; Target Name: PC; Sample Tissue:
Human Fetal Lung; Antibody Dilution: 1.0 ug/ml