

## Product datasheet for **TA342670**

### Metabotropic Glutamate Receptor 7 (GRM7) Rabbit Polyclonal Antibody

#### Product data:

Product Type:	Primary Antibodies
Applications:	WB
Recommended Dilution:	WB
Reactivity:	Human
Host:	Rabbit
Isotype:	IgG
Clonality:	Polyclonal
Immunogen:	The immunogen for anti-GRM7 antibody: synthetic peptide directed towards the C terminal of human GRM7. Synthetic peptide located within the following region: HPELNVQKRKRSFKAVVTAATMSSRLSHKPSDRPNGEAKTELCENVDPNS
Formulation:	Liquid. Purified antibody supplied in 1x PBS buffer with 0.09% (w/v) sodium azide and 2% sucrose. <i>Note that this product is shipped as lyophilized powder to China customers.</i>
Conjugation:	Unconjugated
Storage:	Store at -20°C as received.
Stability:	Stable for 12 months from date of receipt.
Predicted Protein Size:	99 kDa
Gene Name:	glutamate metabotropic receptor 7
Database Link:	<a href="#">NP_000835</a> <a href="#">Entrez Gene 2917 Human</a> <a href="#">Q14831</a>



[View online »](#)

**Background:** L-glutamate is the major excitatory neurotransmitter in the central nervous system, and it activates both ionotropic and metabotropic glutamate receptors. Glutamatergic neurotransmission is involved in most aspects of normal brain function and can be perturbed in many neuropathologic conditions. The metabotropic glutamate receptors are a family of G protein-coupled receptors that have been divided into three groups on the basis of sequence homology, putative signal transduction mechanisms, and pharmacologic properties. Group I includes GRM1 and GRM5, and these receptors have been shown to activate phospholipase C. Group II includes GRM2 and GRM3, while Group III includes GRM4, GRM6, GRM7 and GRM8. Group II and III receptors are linked to the inhibition of the cyclic AMP cascade but differ in their agonist selectivities. Multiple transcript variants encoding different isoforms have been found for this gene.

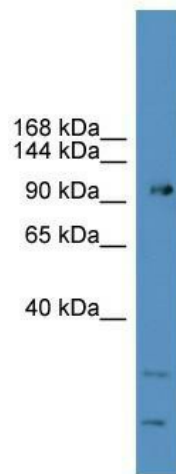
**Synonyms:** GLUR7; GPRC1G; MGLU7; MGLUR7; PPP1R87

**Note:** Immunogen Sequence Homology: Dog: 100%; Pig: 100%; Rat: 100%; Horse: 100%; Human: 100%; Mouse: 100%; Bovine: 100%; Rabbit: 100%; Zebrafish: 100%; Guinea pig: 100%

**Protein Families:** Druggable Genome, GPCR, Transmembrane

**Protein Pathways:** Neuroactive ligand-receptor interaction

### Product images:



WB Suggested Anti-GRM7 Antibody Titration: 0.2-1 ug/ml; ELISA Titer: 1:312500; Positive Control: 721\_B cell lysate GRM7 is supported by BioGPS gene expression data to be expressed in 721\_B