

Product datasheet for **TA342669**

Metabotropic Glutamate Receptor 3 (GRM3) Rabbit Polyclonal Antibody

Product data:

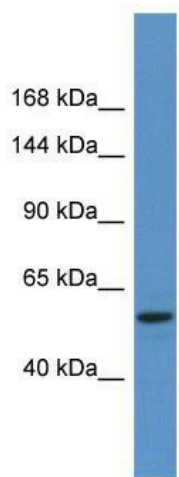
Product Type:	Primary Antibodies
Applications:	WB
Recommended Dilution:	WB
Reactivity:	Human
Host:	Rabbit
Isotype:	IgG
Clonality:	Polyclonal
Immunogen:	The immunogen for anti-GRM3 antibody is: synthetic peptide directed towards the C-terminal region of HUMAN GRM3. Synthetic peptide located within the following region: RDFWEQKFQCSLQNKRNHRRVCDKHLAIDSSNYEQESKIMFVVNAVYAMA
Formulation:	Liquid. Purified antibody supplied in 1x PBS buffer with 0.09% (w/v) sodium azide and 2% sucrose. <i>Note that this product is shipped as lyophilized powder to China customers.</i>
Purification:	Affinity Purified
Conjugation:	Unconjugated
Storage:	Store at -20°C as received.
Stability:	Stable for 12 months from date of receipt.
Predicted Protein Size:	59 kDa
Gene Name:	glutamate metabotropic receptor 3
Database Link:	NP_000831 Entrez Gene 2913 Human Q14832
Background:	The function of this protein remains unknown.
Synonyms:	GLUR3; GPRC1C; mGlu3; MGLUR3
Note:	Immunogen Sequence Homology: Dog: 100%; Horse: 100%; Human: 100%; Mouse: 100%; Rat: 93%; Bovine: 92%; Rabbit: 85%
Protein Families:	Druggable Genome, GPCR, Transmembrane



[View online »](#)

Protein Pathways: Neuroactive ligand-receptor interaction

Product images:



Host: Rabbit; Target Name: GRM3; Sample
Tissue: NCI-H226 Whole Cell lysates; Antibody
Dilution: 1.0 ug/ml