

## Product datasheet for **TA342668**

### Metabotropic Glutamate Receptor 3 (GRM3) Rabbit Polyclonal Antibody

#### Product data:

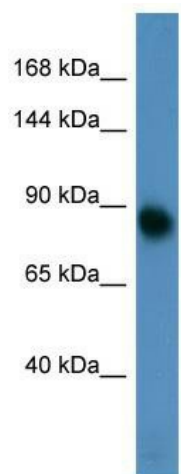
Product Type:	Primary Antibodies
Applications:	WB
Recommended Dilution:	WB
Reactivity:	Human
Host:	Rabbit
Isotype:	IgG
Clonality:	Polyclonal
Immunogen:	The immunogen for anti-GRM3 antibody is: synthetic peptide directed towards the N-terminal region of Human GRM3. Synthetic peptide located within the following region: NHRNPWFRDFWEQKFQCSLQNKRNHRRVCDKHLAIDSSNYEQESKIMFVV
Formulation:	Liquid. Purified antibody supplied in 1x PBS buffer with 0.09% (w/v) sodium azide and 2% sucrose. <i>Note that this product is shipped as lyophilized powder to China customers.</i>
Purification:	Affinity Purified
Conjugation:	Unconjugated
Storage:	Store at -20°C as received.
Stability:	Stable for 12 months from date of receipt.
Predicted Protein Size:	82 kDa
Gene Name:	glutamate metabotropic receptor 3
Database Link:	<a href="#">NP_000831</a> <a href="#">Entrez Gene 2913 Human</a> <a href="#">Q14832</a>
Background:	The function of this protein remains unknown.
Synonyms:	GLUR3; GPRC1C; mGlu3; MGLUR3
Note:	Immunogen Sequence Homology: Rat: 100%; Human: 100%; Mouse: 100%; Bovine: 100%; Rabbit: 100%; Horse: 93%; Dog: 92%; Pig: 86%; Guinea pig: 86%; Zebrafish
Protein Families:	Druggable Genome, GPCR, Transmembrane



[View online »](#)

Protein Pathways: Neuroactive ligand-receptor interaction

**Product images:**



Host: Rabbit; Target Name: GRM3; Sample  
Tissue: 293T Whole Cell lysates; Antibody  
Dilution: 1.0 ug/ml