

## Product datasheet for **TA342666**

### GADL1 Rabbit Polyclonal Antibody

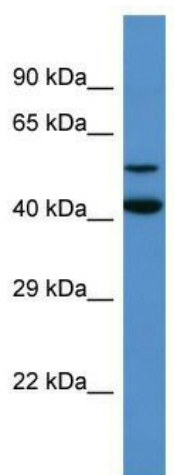
#### Product data:

Product Type:	Primary Antibodies
Applications:	WB
Recommended Dilution:	WB
Reactivity:	Human
Host:	Rabbit
Isotype:	IgG
Clonality:	Polyclonal
Immunogen:	The immunogen for anti-GADL1 antibody is: synthetic peptide directed towards the middle region of Human GADL1. Synthetic peptide located within the following region: DLLKKCYSAKASYLFQQDKFYDVSYDTGDKSIQCSRRPDAFKFWMTWKAL
Formulation:	Liquid. Purified antibody supplied in 1x PBS buffer with 0.09% (w/v) sodium azide and 2% sucrose. <i>Note that this product is shipped as lyophilized powder to China customers.</i>
Purification:	Affinity Purified
Conjugation:	Unconjugated
Storage:	Store at -20°C as received.
Stability:	Stable for 12 months from date of receipt.
Predicted Protein Size:	57 kDa
Gene Name:	glutamate decarboxylase like 1
Database Link:	<a href="#">NP_997242</a> <a href="#">Entrez Gene 339896 Human</a> <a href="#">Q6ZQY3</a>
Background:	The function of this protein remains unknown.
Synonyms:	ADC; CSADC; HuADC; HuCSADC
Note:	Immunogen Sequence Homology: Dog: 100%; Pig: 100%; Rat: 100%; Horse: 100%; Human: 100%; Mouse: 100%; Bovine: 100%; Rabbit: 100%; Guinea pig: 100%; Zebrafish: 93%
Protein Families:	Druggable Genome



[View online »](#)

## Product images:



Host: Rabbit; Target Name: GADL1; Sample  
Tissue: HeLa Whole Cell lysates; Antibody Dilution:  
1.0 ug/ml