

Product datasheet for **TA342665**

ALDH9A1 Rabbit Polyclonal Antibody

Product data:

Product Type:	Primary Antibodies
Applications:	WB
Recommended Dilution:	WB
Reactivity:	Human
Host:	Rabbit
Isotype:	IgG
Clonality:	Polyclonal
Immunogen:	The immunogen for anti-ALDH9A1 antibody: synthetic peptide directed towards the C terminal of human ALDH9A1. Synthetic peptide located within the following region: MGPLINRPHLERVLGFVKVAKEQGAKVLCGGDIYVPEDPKLKDGYMRPC
Formulation:	Liquid. Purified antibody supplied in 1x PBS buffer with 0.09% (w/v) sodium azide and 2% sucrose. <i>Note that this product is shipped as lyophilized powder to China customers.</i>
Conjugation:	Unconjugated
Storage:	Store at -20°C as received.
Stability:	Stable for 12 months from date of receipt.
Predicted Protein Size:	56 kDa
Gene Name:	aldehyde dehydrogenase 9 family member A1
Database Link:	NP_000687 Entrez Gene 223 Human P49189
Background:	This protein belongs to the aldehyde dehydrogenase family of proteins. It has a high activity for oxidation of gamma-aminobutyraldehyde and other amino aldehydes. The enzyme catalyzes the dehydrogenation of gamma-aminobutyraldehyde to gamma-aminobutyric acid (GABA). This isozyme is a tetramer of identical 54-kD subunits.
Synonyms:	ALDH4; ALDH7; ALDH9; E3; TMABADH
Note:	Immunogen Sequence Homology: Pig: 100%; Rat: 100%; Horse: 100%; Human: 100%; Rabbit: 100%; Guinea pig: 100%; Dog: 93%; Zebrafish: 91%; Mouse: 86%; Bovine: 86%

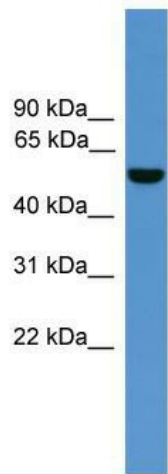


[View online »](#)

Protein Families: Druggable Genome

Protein Pathways: Arginine and proline metabolism, Ascorbate and aldarate metabolism, beta-Alanine metabolism, Butanoate metabolism, Fatty acid metabolism, Glycerolipid metabolism, Glycolysis / Gluconeogenesis, Histidine metabolism, Limonene and pinene degradation, Lysine degradation, Metabolic pathways, Propanoate metabolism, Pyruvate metabolism, Tryptophan metabolism, Valine, leucine and isoleucine degradation

Product images:



WB Suggested Anti-ALDH9A1 Antibody Titration: 0.2-1 ug/ml; ELISA Titer: 1:1562500; Positive Control: Human Liver

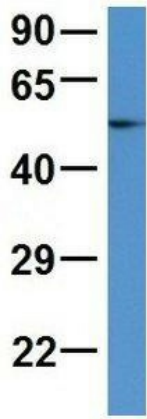
ALDH9A1



Rabbit Anti-ALDH9A1
 Sample Type: Human Fetal Brain
 Antibody Concentration: 1ug/mL

Host: Rabbit; Target Name: ALDH9A1; Sample Tissue: Human Fetal Brain; Antibody Dilution: 1.0 ug/ml

ALDH9A1



Rabbit Anti-ALDH9A1

Sample Type: Human Adult Placenta

Antibody Concentration: 1ug/mL

Host: Rabbit; Target Name: ALDH9A1; Sample Tissue: Human Adult Placenta; Antibody Dilution: 1.0 ug/ml