

Product datasheet for **TA342664**

SLC6A11 Rabbit Polyclonal Antibody

Product data:

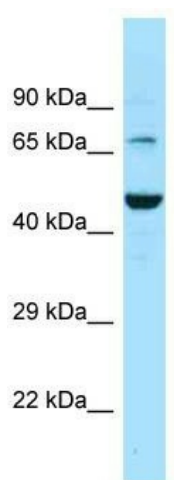
Product Type:	Primary Antibodies
Applications:	WB
Recommended Dilution:	WB
Reactivity:	Human
Host:	Rabbit
Isotype:	IgG
Clonality:	Polyclonal
Immunogen:	The immunogen for anti-SLC6A11 antibody is: synthetic peptide directed towards the C-terminal region of Human SLC6A11. Synthetic peptide located within the following region: EGTLPKQLKLTTPSTDLMRGKLGVSPPMVTVNDCKAKLKSDGTIAAIT
Formulation:	Liquid. Purified antibody supplied in 1x PBS buffer with 0.09% (w/v) sodium azide and 2% sucrose. <i>Note that this product is shipped as lyophilized powder to China customers.</i>
Purification:	Affinity Purified
Conjugation:	Unconjugated
Storage:	Store at -20°C as received.
Stability:	Stable for 12 months from date of receipt.
Predicted Protein Size:	70 kDa
Gene Name:	solute carrier family 6 member 11
Database Link:	NP_055044 Entrez Gene 6538 Human P48066
Background:	Gamma-aminobutyric acid (GABA) is a major inhibitory neurotransmitter. GABAergic neurotransmission is terminated by the uptake of GABA into the presynaptic terminal and the surrounding astroglial cells by sodium-dependent transporters, such as SLC6A11.
Synonyms:	GAT-3; GAT3; GAT4
Note:	Immunogen Sequence Homology: Human: 100%; Rabbit: 93%; Dog: 92%; Pig: 92%; Rat: 92%; Guinea pig: 92%; Horse: 85%; Bovine: 85%; Mouse



[View online »](#)

Protein Families: Druggable Genome, Transmembrane

Product images:



Host: Rabbit; Target Name: SLC6A11; Sample Tissue: PANC1 Whole Cell lysates; Antibody Dilution: 1.0 ug/ml