

Product datasheet for **TA342663**

ALDH5A1 Rabbit Polyclonal Antibody

Product data:

Product Type:	Primary Antibodies
Applications:	WB
Recommended Dilution:	WB
Reactivity:	Human
Host:	Rabbit
Isotype:	IgG
Clonality:	Polyclonal
Immunogen:	The immunogen for anti-ALDH5A1 antibody: synthetic peptide directed towards the middle region of human ALDH5A1. Synthetic peptide located within the following region: AFFLEWFSEEARVYGDIIHTPAKDRRALVLKQPIGVAAVITPWNFPSAM
Formulation:	Liquid. Purified antibody supplied in 1x PBS buffer with 0.09% (w/v) sodium azide and 2% sucrose. <i>Note that this product is shipped as lyophilized powder to China customers.</i>
Conjugation:	Unconjugated
Storage:	Store at -20°C as received.
Stability:	Stable for 12 months from date of receipt.
Predicted Protein Size:	57 kDa
Gene Name:	aldehyde dehydrogenase 5 family member A1
Database Link:	NP_001071 Entrez Gene 7915 Human P51649
Background:	This protein belongs to the aldehyde dehydrogenase family of proteins. This gene encodes a mitochondrial NAD(+)-dependent succinic semialdehyde dehydrogenase. A deficiency of this enzyme, known as 4-hydroxybutyricaciduria, is a rare inborn error in the metabolism of the neurotransmitter 4-aminobutyric acid (GABA). In response to the defect, physiologic fluids from patients accumulate GHB, a compound with numerous neuromodulatory properties. Two transcript variants encoding distinct isoforms have been identified for this gene.
Synonyms:	SSADH; SSDH



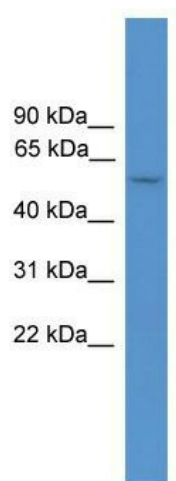
[View online »](#)

Note: Immunogen Sequence Homology: Human: 100%; Rat: 86%; Bovine: 86%; Pig: 79%; Rabbit: 79%; Guinea pig: 79%

Protein Families: Druggable Genome

Protein Pathways: Alanine, aspartate and glutamate metabolism, Butanoate metabolism, Metabolic pathways

Product images:



WB Suggested Anti-ALDH5A1 Antibody Titration:
0.2-1 ug/ml; ELISA Titer: 1:312500; Positive
Control: Human Placenta