

## Product datasheet for **TA342660**

### CLRN1 Rabbit Polyclonal Antibody

#### Product data:

Product Type:	Primary Antibodies
Applications:	WB
Recommended Dilution:	WB
Reactivity:	Human
Host:	Rabbit
Isotype:	IgG
Clonality:	Polyclonal
Immunogen:	The immunogen for anti-CLRN1 antibody: synthetic peptide directed towards the C terminal of human CLRN1. Synthetic peptide located within the following region: QSEKYTTSFWVIFCFVHFLNGLLIRLAGFQFPFAKSKDAETTNVAADL
Formulation:	Liquid. Purified antibody supplied in 1x PBS buffer with 0.09% (w/v) sodium azide and 2% sucrose. <i>Note that this product is shipped as lyophilized powder to China customers.</i>
Conjugation:	Unconjugated
Storage:	Store at -20°C as received.
Stability:	Stable for 12 months from date of receipt.
Predicted Protein Size:	26 kDa
Gene Name:	clarin 1
Database Link:	<a href="#">NP_777367</a> <a href="#">Entrez Gene 7401 Human</a> <a href="#">P58418</a>
Background:	This gene encodes a protein that contains a cytosolic N-terminus, multiple helical transmembrane domains, and an endoplasmic reticulum membrane retention signal, TKGH, in the C-terminus. The encoded protein may be important in development and homeostasis of the inner ear and retina. Mutations within this gene have been associated with Usher syndrome type IIIa. Multiple transcript variants encoding distinct isoforms have been identified for this gene.
Synonyms:	RP61; USH3; USH3A

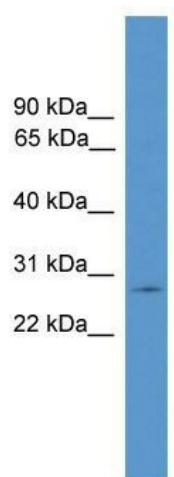


[View online »](#)

**Note:** Immunogen Sequence Homology: Human: 100%; Dog: 93%; Pig: 93%; Horse: 93%; Guinea pig: 93%; Rat: 86%; Bovine: 86%; Rabbit: 86%; Mouse: 79%

**Protein Families:** Transmembrane

### Product images:



WB Suggested Anti-CLRN1 Antibody Titration: 0.2-1 ug/ml; ELISA Titer: 1:1562500; Positive Control: Human brain