

Product datasheet for **TA342659**

BSND Rabbit Polyclonal Antibody

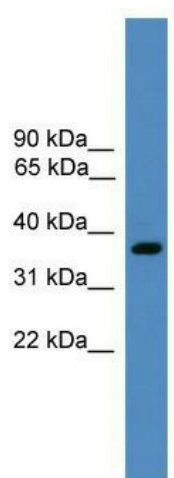
Product data:

Product Type:	Primary Antibodies
Applications:	WB
Recommended Dilution:	WB
Reactivity:	Human
Host:	Rabbit
Isotype:	IgG
Clonality:	Polyclonal
Immunogen:	The immunogen for anti-BSND antibody: synthetic peptide directed towards the middle region of human BSND. Synthetic peptide located within the following region: PNASPHDREEACSPQQEPQGCRCLDRFQDFALIDAPLLEDEPQEGQQWE
Formulation:	Liquid. Purified antibody supplied in 1x PBS buffer with 0.09% (w/v) sodium azide and 2% sucrose. <i>Note that this product is shipped as lyophilized powder to China customers.</i>
Conjugation:	Unconjugated
Storage:	Store at -20°C as received.
Stability:	Stable for 12 months from date of receipt.
Predicted Protein Size:	35 kDa
Gene Name:	barttin CLCNK type accessory beta subunit
Database Link:	NP_476517 Entrez Gene 7809 Human Q8WZ55
Background:	This gene encodes an essential beta subunit for CLC chloride channels. These heteromeric channels localize to basolateral membranes of renal tubules and of potassium-secreting epithelia of the inner ear. Mutations in this gene have been associated with Bartter syndrome with sensorineural deafness.
Synonyms:	BART; DFNB73
Note:	Immunogen Sequence Homology: Human: 100%
Protein Families:	Druggable Genome, Transmembrane



[View online »](#)

Product images:



WB Suggested Anti-BSND Antibody Titration: 0.2-1 ug/ml; ELISA Titer: 1:62500; Positive Control: Human heart