

## Product datasheet for **TA342656**

### Nociceptin receptor (OPRL1) Rabbit Polyclonal Antibody

#### Product data:

Product Type:	Primary Antibodies
Applications:	WB
Recommended Dilution:	WB
Reactivity:	Human
Host:	Rabbit
Isotype:	IgG
Clonality:	Polyclonal
Immunogen:	The immunogen for anti-OPRL1 antibody: synthetic peptide directed towards the middle region of human OPRL1. Synthetic peptide located within the following region: ISVCYSLMIRRLRGVRLLSGSREKDRNLRRITRLVLLVVAVFVGCWTPVQ
Formulation:	Liquid. Purified antibody supplied in 1x PBS buffer with 0.09% (w/v) sodium azide and 2% sucrose. <i>Note that this product is shipped as lyophilized powder to China customers.</i>
Conjugation:	Unconjugated
Storage:	Store at -20°C as received.
Stability:	Stable for 12 months from date of receipt.
Predicted Protein Size:	41 kDa
Gene Name:	opioid related nociceptin receptor 1
Database Link:	<a href="#">NP_872588</a> <a href="#">Entrez Gene 4987 Human P41146</a>
Background:	The protein encoded by this gene is a G protein-coupled receptor whose expression can be induced by phytohemagglutinin. The encoded integral membrane protein is a receptor for the 17 aa neuropeptide nociceptin/orphanin FQ. This gene may be involved in the regulation of numerous brain activities, particularly instinctive and emotional behaviors. A promoter for this gene also functions as a promoter for another gene, regulator of G-protein signalling 19 (RGS19), located on the opposite strand. Three transcript variants encoding the same protein have been found for this gene.



[View online »](#)

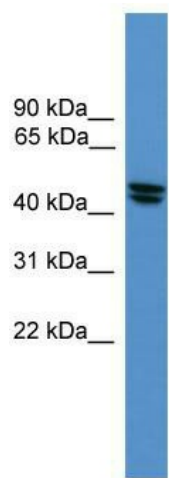
**Synonyms:** KOR-3; NOCIR; NOP; NOPr; OOR; ORL1

**Note:** Immunogen Sequence Homology: Dog: 100%; Pig: 100%; Rat: 100%; Goat: 100%; Horse: 100%; Human: 100%; Mouse: 100%; Sheep: 100%; Bovine: 100%; Rabbit: 100%; Zebrafish: 100%; Guinea pig: 100%

**Protein Families:** Druggable Genome, GPCR, Transmembrane

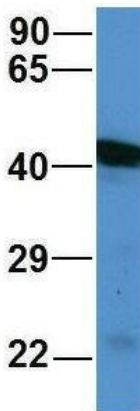
**Protein Pathways:** Neuroactive ligand-receptor interaction

**Product images:**



WB Suggested Anti-OPRL1 Antibody Titration: 0.2-1 ug/ml; ELISA Titer: 1:312500; Positive Control: HepG2 cell lysate

**OPRL1**



Rabbit Anti-OPRL1  
Sample Type: Human 721\_B  
Antibody Concentration: 1ug/mL

Host: Rabbit; Target Name: WT1; Sample Tissue: Human 721\_B cells; Antibody Dilution: 1.0 ug/ml  
OPRL1 is strongly supported by BioGPS gene expression data to be expressed in Human 721\_B cells