

Product datasheet for **TA342655**

NPFFR2 Rabbit Polyclonal Antibody

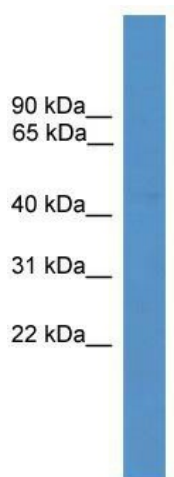
Product data:

| | |
|--------------------------------|---|
| Product Type: | Primary Antibodies |
| Applications: | WB |
| Recommended Dilution: | WB |
| Reactivity: | Human |
| Host: | Rabbit |
| Isotype: | IgG |
| Clonality: | Polyclonal |
| Immunogen: | The immunogen for anti-NPFFR2 antibody: synthetic peptide directed towards the middle region of human NPFFR2. Synthetic peptide located within the following region: VPHTGRKNQEQWHVSRKKQKIIKMLLIVALLFILSWLPLWTLMLMSDYA |
| Formulation: | Liquid. Purified antibody supplied in 1x PBS buffer with 0.09% (w/v) sodium azide and 2% sucrose. |
| Conjugation: | Unconjugated |
| Storage: | Store at -20°C as received. |
| Stability: | Stable for 12 months from date of receipt. |
| Predicted Protein Size: | 46 kDa |
| Gene Name: | neuropeptide FF receptor 2 |
| Database Link: | NP_444264 Entrez Gene 10886 Human Q9Y5X5 |
| Background: | This gene encodes a member of a subfamily of G-protein-coupled neuropeptide receptors. This protein is activated by the neuropeptides A-18-amide (NPAF) and F-8-amide (NPFF) and may function in pain modulation and regulation of the opioid system. Alternative splicing results in multiple transcript variants. |
| Synonyms: | GPR74; HLWAR77; NPFF2; NPGPR |
| Note: | Immunogen Sequence Homology: Human: 100%; Horse: 85%; Bovine: 79% |
| Protein Families: | Druggable Genome, Transmembrane |



[View online »](#)

Protein Pathways: Neuroactive ligand-receptor interaction

Product images:

WB Suggested Anti-NPFFR2 Antibody Titration:
0.2-1 ug/ml; ELISA Titer: 1:1562500; Positive
Control: Jurkat cell lysate