

## Product datasheet for **TA342654**

### **NPFFR2 Rabbit Polyclonal Antibody**

#### **Product data:**

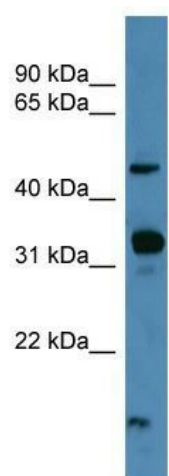
<b>Product Type:</b>	Primary Antibodies
<b>Applications:</b>	WB
<b>Recommended Dilution:</b>	WB
<b>Reactivity:</b>	Human
<b>Host:</b>	Rabbit
<b>Isotype:</b>	IgG
<b>Clonality:</b>	Polyclonal
<b>Immunogen:</b>	The immunogen for anti-NPFFR2 antibody: synthetic peptide directed towards the C terminal of human NPFFR2. Synthetic peptide located within the following region: KAKSHVLINTSNQLVQESTFQNPHGGETLLYRKSAEKPQQELVMEELKETT
<b>Formulation:</b>	Liquid. Purified antibody supplied in 1x PBS buffer with 0.09% (w/v) sodium azide and 2% sucrose. <i>Note that this product is shipped as lyophilized powder to China customers.</i>
<b>Conjugation:</b>	Unconjugated
<b>Storage:</b>	Store at -20°C as received.
<b>Stability:</b>	Stable for 12 months from date of receipt.
<b>Predicted Protein Size:</b>	46 kDa
<b>Gene Name:</b>	neuropeptide FF receptor 2
<b>Database Link:</b>	<a href="#">NP_444264</a> <a href="#">Entrez Gene 10886 Human Q9Y5X5</a>
<b>Background:</b>	This gene encodes a member of a subfamily of G-protein-coupled neuropeptide receptors. This protein is activated by the neuropeptides A-18-amide (NPAF) and F-8-amide (NPFF) and may function in pain modulation and regulation of the opioid system. Alternative splicing results in multiple transcript variants.
<b>Synonyms:</b>	GPR74; HLWAR77; NPFF2; NPGPR
<b>Note:</b>	Immunogen Sequence Homology: Human: 100%
<b>Protein Families:</b>	Druggable Genome, Transmembrane



[View online »](#)

Protein Pathways: Neuroactive ligand-receptor interaction

### Product images:



WB Suggested Anti-NPFFR2 Antibody Titration:  
0.2-1 ug/ml; ELISA Titer: 1:1562500; Positive  
Control: THP-1 cell lysate