

Product datasheet for **TA342651**

Somatostatin Receptor 1 (SSTR1) Rabbit Polyclonal Antibody

Product data:

Product Type:	Primary Antibodies
Applications:	IHC, WB
Recommended Dilution:	WB, IHC
Reactivity:	Human
Host:	Rabbit
Isotype:	IgG
Clonality:	Polyclonal
Immunogen:	The immunogen for anti-SSTR1 antibody: synthetic peptide directed towards the C terminal of human SSTR1. Synthetic peptide located within the following region: RMVALKAGWQQRKRSERKITLMVMMVMVFVICWMPFYVVQLVNVFAEQD
Formulation:	Liquid. Purified antibody supplied in 1x PBS buffer with 0.09% (w/v) sodium azide and 2% sucrose. <i>Note that this product is shipped as lyophilized powder to China customers.</i>
Conjugation:	Unconjugated
Storage:	Store at -20°C as received.
Stability:	Stable for 12 months from date of receipt.
Predicted Protein Size:	43 kDa
Gene Name:	somatostatin receptor 1
Database Link:	NP_001040 Entrez Gene 6751 Human P30872
Background:	Somatostatin acts at many sites to inhibit the release of many hormones and other secretory proteins. The biological effects of somatostatin are probably mediated by a family of G protein-coupled receptors that are expressed in a tissue-specific manner. The encoded protein is a member of the superfamily of somatostatin receptors having seven transmembrane segments, and is expressed in highest levels in jejunum and stomach.
Synonyms:	SRIF-2; SS-1-R; SS1-R; SS1R



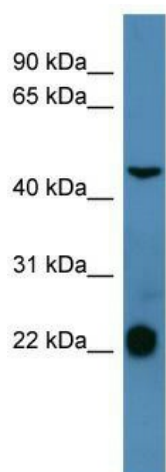
[View online »](#)

Note: Immunogen Sequence Homology: Dog: 100%; Pig: 100%; Rat: 100%; Goat: 100%; Horse: 100%; Human: 100%; Mouse: 100%; Bovine: 100%; Rabbit: 100%; Guinea pig: 100%; Zebrafish: 93%; Sheep: 86%

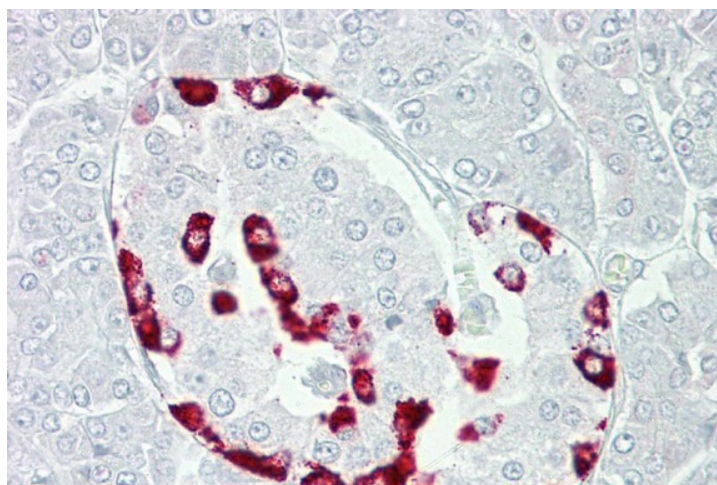
Protein Families: Druggable Genome, GPCR, Transmembrane

Protein Pathways: Neuroactive ligand-receptor interaction

Product images:



WB Suggested Anti-SSTR1 Antibody Titration: 0.2-1 ug/ml; ELISA Titer: 1:1562500; Positive Control: THP-1 cell lysate



Immunohistochemistry with Pancreas tissue at an antibody concentration of 5 ug/ml using anti-SSTR1 antibody