

## Product datasheet for **TA342650**

### Somatostatin Receptor 1 (SSTR1) Rabbit Polyclonal Antibody

#### Product data:

Product Type:	Primary Antibodies
Applications:	WB
Recommended Dilution:	WB
Reactivity:	Mouse
Host:	Rabbit
Isotype:	IgG
Clonality:	Polyclonal
Immunogen:	The immunogen for anti-Sstr1 antibody is: synthetic peptide directed towards the C-terminal region of Mouse Sstr1. Synthetic peptide located within the following region: QRILCLSWMDNAAEEPVDYYATALKSRAYSVEDFQPENLESGGVFRNGTC
Formulation:	Liquid. Purified antibody supplied in 1x PBS buffer with 0.09% (w/v) sodium azide and 2% sucrose. <i>Note that this product is shipped as lyophilized powder to China customers.</i>
Conjugation:	Unconjugated
Storage:	Store at -20°C as received.
Stability:	Stable for 12 months from date of receipt.
Predicted Protein Size:	43 kDa
Gene Name:	somatostatin receptor 1
Database Link:	<a href="#">NP_001040</a> <a href="#">Entrez Gene 20605 Mouse P30872</a>
Background:	Sstr1 is a receptor for somatostatin with higher affinity for somatostatin-14 than -28. This receptor is coupled via pertussis toxin sensitive G proteins to inhibition of adenylyl cyclase. In addition it stimulates phosphotyrosine phosphatase and Na <sup>+</sup> /H <sup>+</sup> exchanger via pertussis toxin insensitive G proteins.
Synonyms:	SRIF-2; SS-1-R; SS1-R; SS1R



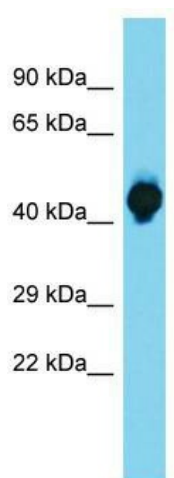
[View online »](#)

**Note:** Immunogen Sequence Homology: Pig: 100%; Rat: 100%; Goat: 100%; Horse: 100%; Human: 100%; Mouse: 100%; Sheep: 100%; Bovine: 100%; Rabbit: 100%; Guinea pig: 100%; Dog: 93%; Zebrafish: 80%

**Protein Families:** Druggable Genome, GPCR, Transmembrane

**Protein Pathways:** Neuroactive ligand-receptor interaction

**Product images:**



Host: Rabbit; Target Name: Sstr1; Sample Tissue: Mouse Muscle lysates; Antibody Dilution: 1.0 ug/ml