

Product datasheet for **TA342648**

TAC1 Rabbit Polyclonal Antibody

Product data:

Product Type:	Primary Antibodies
Applications:	WB
Recommended Dilution:	WB
Reactivity:	Human
Host:	Rabbit
Isotype:	IgG
Clonality:	Polyclonal
Immunogen:	The immunogen for anti-TAC1 antibody: synthetic peptide directed towards the middle region of human TAC1. Synthetic peptide located within the following region: MKILVALAVFFLVSTQLFAEEIGANDDLNYWSDWYDSDQIKEELPEPFEH
Formulation:	Liquid. Purified antibody supplied in 1x PBS buffer with 0.09% (w/v) sodium azide and 2% sucrose. <i>Note that this product is shipped as lyophilized powder to China customers.</i>
Conjugation:	Unconjugated
Storage:	Store at -20°C as received.
Stability:	Stable for 12 months from date of receipt.
Predicted Protein Size:	13 kDa
Gene Name:	tachykinin precursor 1
Database Link:	NP_054703 Entrez Gene 6863 Human P20366
Background:	This gene encodes four products of the tachykinin peptide hormone family, substance P and neurokinin A, as well as the related peptides, neuropeptide K and neuropeptide gamma. These hormones are thought to function as neurotransmitters which interact with nerve receptors and smooth muscle cells. They are known to induce behavioral responses and function as vasodilators and secretagogues. Multiple transcript variants encoding different isoforms have been found for this gene.
Synonyms:	Hs.2563; NK2; NKNA; NPK; TAC2

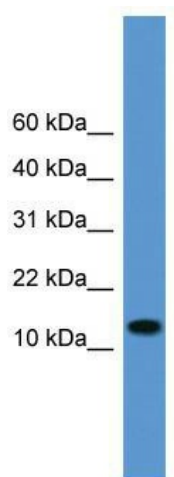


[View online »](#)

Note: Immunogen Sequence Homology: Dog: 100%; Pig: 100%; Rat: 100%; Horse: 100%; Human: 100%; Rabbit: 100%; Guinea pig: 100%; Sheep: 92%; Bovine: 92%; Mouse: 85%; Yeast: 79%

Protein Families: Druggable Genome, Secreted Protein

Product images:



WB Suggested Anti-TAC1 Antibody; Titration: 1.0 ug/ml; Positive Control: 721_B Whole Cell