

## Product datasheet for **TA342647**

### Relaxin 3 receptor 1 (RXFP3) Rabbit Polyclonal Antibody

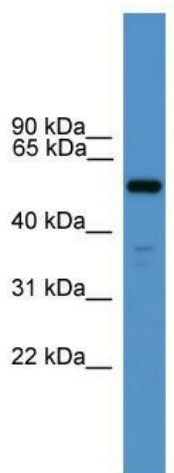
#### Product data:

Product Type:	Primary Antibodies
Applications:	WB
Recommended Dilution:	WB
Reactivity:	Human
Host:	Rabbit
Isotype:	IgG
Clonality:	Polyclonal
Immunogen:	The immunogen for anti-RXFP3 antibody: synthetic peptide directed towards the N terminal of human RXFP3. Synthetic peptide located within the following region: ELGLELPDGAPPGHPPGSGGAESADTEARVRILISVVYWVVCALGLAGNL
Formulation:	Liquid. Purified antibody supplied in 1x PBS buffer with 0.09% (w/v) sodium azide and 2% sucrose. <i>Note that this product is shipped as lyophilized powder to China customers.</i>
Conjugation:	Unconjugated
Storage:	Store at -20°C as received.
Stability:	Stable for 12 months from date of receipt.
Predicted Protein Size:	51 kDa
Gene Name:	relaxin/insulin like family peptide receptor 3
Database Link:	<a href="#">NP_057652</a> <a href="#">Entrez Gene 51289 Human</a> <a href="#">Q9NSD7</a>
Background:	RXFP3 is the receptor for RNL3/relaxin-3. Binding of the ligand inhibit cAMP accumulation.
Synonyms:	GPCR135; RLN3R1; RXFPR3; SALPR
Note:	Immunogen Sequence Homology: Rat: 100%; Human: 100%; Pig: 86%; Mouse: 86%; Rabbit: 86%; Bovine: 79%; Guinea pig: 79%
Protein Families:	Druggable Genome, GPCR, Transmembrane



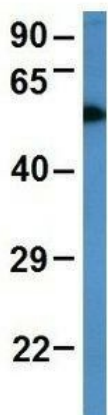
[View online »](#)

Product images:



WB Suggested Anti-RXFP3 Antibody Titration: 0.2-1 ug/ml; ELISA Titer: 1:1562500; Positive Control: 293T cell lysate

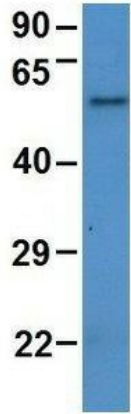
**RXFP3**



Rabbit Anti-RXFP3  
 Sample Type: Human Fetal Brain  
 Antibody Concentration: 1ug/mL

Host: Rabbit; Target Name: RXFP3; Sample Tissue: Human Fetal Brain; Antibody Dilution: 1.0 ug/ml

## RXFP3



Rabbit Anti-RXFP3  
Sample Type: Human Adult Placenta  
Antibody Concentration: 1ug/mL

Host: Rabbit; Target Name: RXFP3; Sample Tissue: Human Adult Placenta; Antibody Dilution: 1.0 ug/ml