

## Product datasheet for **TA342646**

### Cortistatin (CORT) Rabbit Polyclonal Antibody

#### Product data:

Product Type:	Primary Antibodies
Applications:	WB
Recommended Dilution:	WB
Reactivity:	Human
Host:	Rabbit
Isotype:	IgG
Clonality:	Polyclonal
Immunogen:	The immunogen for anti-CORT antibody: synthetic peptide directed towards the N terminal of human CORT. Synthetic peptide located within the following region: MPLSPGLLLLLLSGATATAALPLEGGPTGRDSEHMQEAAAGIRKSSLLTFL
Formulation:	Liquid. Purified antibody supplied in 1x PBS buffer with 0.09% (w/v) sodium azide and 2% sucrose. <i>Note that this product is shipped as lyophilized powder to China customers.</i>
Conjugation:	Unconjugated
Storage:	Store at -20°C as received.
Stability:	Stable for 12 months from date of receipt.
Predicted Protein Size:	2 kDa
Gene Name:	cortistatin
Database Link:	<a href="#">NP_001293</a> <a href="#">Entrez Gene 1325 Human</a> <a href="#">O00230</a>



[View online »](#)

**Background:**

This gene encodes a neuropeptide that is structurally similar to somatostatin. It binds to all known somatostatin receptors, and shares many pharmacological and functional properties with somatostatin, including the depression of neuronal activity. However, it also has many properties distinct from somatostatin, such as induction of slow-wave sleep, apparently by antagonism of the excitatory effects of acetylcholine on the cortex, reduction of locomotor activity, and activation of cation selective currents not responsive to somatostatin. The preproprotein undergoes further processing into multiple mature products. Read-through transcripts exist between this gene and the upstream APITD1 (apoptosis-inducing, TAF9-like domain 1) gene, as represented in GeneID:100526739.

**Synonyms:**

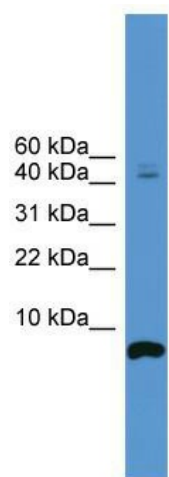
CST-14; CST-17; CST-29

**Note:**

Immunogen Sequence Homology: Human: 100%

**Protein Families:**

Druggable Genome, Secreted Protein

**Product images:**

WB Suggested Anti-CORT Antibody Titration: 0.2-1 ug/ml; ELISA Titer: 1:1562500; Positive Control: 721\_B cell lysate CORT is supported by BioGPS gene expression data to be expressed in 721\_B