

Product datasheet for **TA342644**

VAMP8 Rabbit Polyclonal Antibody

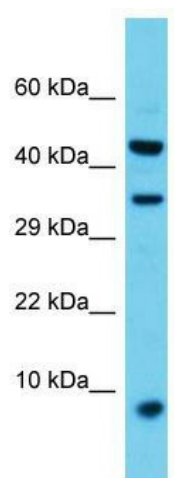
Product data:

Product Type:	Primary Antibodies
Applications:	WB
Recommended Dilution:	WB
Reactivity:	Rat
Host:	Rabbit
Isotype:	IgG
Clonality:	Polyclonal
Immunogen:	The immunogen for anti-Vamp8 antibody is: synthetic peptide directed towards the middle region of Rat Vamp8. Synthetic peptide located within the following region: LDHLRNKTEDLEATSEHFKTTSQKVARKFWWKNVKMIVICVIVLILIL
Formulation:	Liquid. Purified antibody supplied in 1x PBS buffer with 0.09% (w/v) sodium azide and 2% sucrose. <i>Note that this product is shipped as lyophilized powder to China customers.</i>
Conjugation:	Unconjugated
Storage:	Store at -20°C as received.
Stability:	Stable for 12 months from date of receipt.
Predicted Protein Size:	11 kDa
Gene Name:	vesicle associated membrane protein 8
Database Link:	NP_003752 Entrez Gene 83730 Rat Q9BV40
Background:	Vamp8 may mediate exocytosis of synaptic vesicles in neurons.
Synonyms:	EDB; VAMP-8
Note:	Immunogen Sequence Homology: Dog: 100%; Pig: 100%; Rat: 100%; Horse: 100%; Human: 100%; Mouse: 100%; Bovine: 100%; Rabbit: 100%; Guinea pig: 100%; Zebrafish: 85%
Protein Families:	Stem cell - Pluripotency, Transmembrane
Protein Pathways:	SNARE interactions in vesicular transport



[View online »](#)

Product images:



Host: Rabbit; Target Name: Vamp8; Sample Tissue: Rat Spleen lysates; Antibody Dilution: 1.0 ug/ml