

Product datasheet for **TA342643**

Syntaxin 4 (STX4) Rabbit Polyclonal Antibody

Product data:

Product Type:	Primary Antibodies
Applications:	WB
Recommended Dilution:	WB
Reactivity:	Human
Host:	Rabbit
Isotype:	IgG
Clonality:	Polyclonal
Immunogen:	The immunogen for anti-STX4 antibody: synthetic peptide directed towards the middle region of human STX4. Synthetic peptide located within the following region: LKAIEPQKEEADENYNSVNTRMRKTQHGVLSSQQFVELINKCNSMQSEYRE
Formulation:	Liquid. Purified antibody supplied in 1x PBS buffer with 0.09% (w/v) sodium azide and 2% sucrose. <i>Note that this product is shipped as lyophilized powder to China customers.</i>
Conjugation:	Unconjugated
Storage:	Store at -20°C as received.
Stability:	Stable for 12 months from date of receipt.
Predicted Protein Size:	34 kDa
Gene Name:	syntaxin 4
Database Link:	NP_004595 Entrez Gene 6810 Human Q12846
Background:	STX4 is a plasma membrane t-SNARE that mediates docking of transport vesicles. STX4 is necessary for the translocation of SLC2A4 from intracellular vesicles to the plasma membrane. Together with STXB3 and VAMP2, STX4 may also play a role in docking/fusion of intracellular GLUT4-containing vesicles with the cell surface in adipocytes. STX4 may also play a role in docking of synaptic vesicles at presynaptic active zones.
Synonyms:	p35-2; STX4A



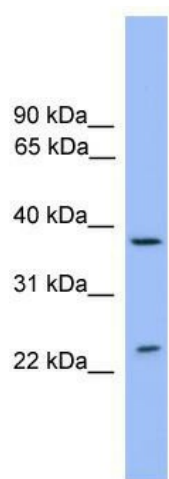
[View online »](#)

Note: Immunogen Sequence Homology: Pig: 100%; Rat: 100%; Horse: 100%; Human: 100%; Mouse: 100%; Bovine: 100%; Rabbit: 100%; Dog: 93%; Guinea pig: 93%

Protein Families: Druggable Genome, Transmembrane

Protein Pathways: SNARE interactions in vesicular transport

Product images:



WB Suggested Anti-STX4 Antibody Titration: 0.2-1 ug/ml; ELISA Titer: 1:1562500; Positive Control: HepG2 cell lysate