

Product datasheet for **TA342640**

SNAP29 Rabbit Polyclonal Antibody

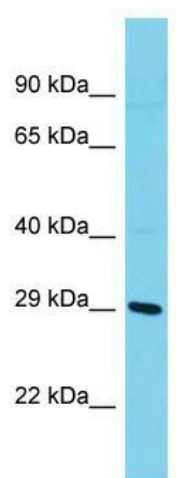
Product data:

Product Type:	Primary Antibodies
Applications:	WB
Recommended Dilution:	WB
Reactivity:	Rat
Host:	Rabbit
Isotype:	IgG
Clonality:	Polyclonal
Immunogen:	The immunogen for anti-Snap29 antibody is: synthetic peptide directed towards the middle region of Rat Snap29. Synthetic peptide located within the following region: QPSSRLKEAINTSKDQESKYQASHPNLRRRLHDAELDSVPASTVNTEVYPK
Formulation:	Liquid. Purified antibody supplied in 1x PBS buffer with 0.09% (w/v) sodium azide and 2% sucrose. <i>Note that this product is shipped as lyophilized powder to China customers.</i>
Conjugation:	Unconjugated
Storage:	Store at -20°C as received.
Stability:	Stable for 12 months from date of receipt.
Predicted Protein Size:	28 kDa
Gene Name:	synaptosome associated protein 29kDa
Database Link:	NP_004773 Entrez Gene 116500 Rat O95721
Background:	Snap29 binds with Snap25 to form complexin.
Synonyms:	CEDNIK; SNAP-29
Note:	Immunogen Sequence Homology: Mouse: 100%; Rat: 93%; Zebrafish: 82%; Human: 79%; Rabbit: 79%
Protein Families:	Druggable Genome
Protein Pathways:	SNARE interactions in vesicular transport



[View online »](#)

Product images:



Host: Rabbit; Target Name: Snap29; Sample Tissue: Rat Testis lysates; Antibody Dilution: 1.0 ug/ml