

## Product datasheet for **TA342639**

### GOSR1 Rabbit Polyclonal Antibody

#### Product data:

Product Type:	Primary Antibodies
Applications:	WB
Recommended Dilution:	WB
Reactivity:	Human
Host:	Rabbit
Isotype:	IgG
Clonality:	Polyclonal
Immunogen:	The immunogen for anti-GOSR1 antibody: synthetic peptide directed towards the C terminal of human GOSR1. Synthetic peptide located within the following region: IHSKMNTLANRFPVNSLIQRINLRKRRDSLILGGVIGICTILLLLYAFH
Formulation:	Liquid. Purified antibody supplied in 1x PBS buffer with 0.09% (w/v) sodium azide and 2% sucrose. <i>Note that this product is shipped as lyophilized powder to China customers.</i>
Conjugation:	Unconjugated
Storage:	Store at -20°C as received.
Stability:	Stable for 12 months from date of receipt.
Predicted Protein Size:	28 kDa
Gene Name:	golgi SNAP receptor complex member 1
Database Link:	<a href="#">NP_004862</a> <a href="#">Entrez Gene 9527 Human</a> <a href="#">O95249</a>
Background:	This gene encodes a trafficking membrane protein which transports proteins among the endoplasmic reticulum and the Golgi and between Golgi compartments. This protein is considered an essential component of the Golgi SNAP receptor (SNARE) complex. Alternatively spliced transcript variants encoding distinct isoforms have been found for this gene.
Synonyms:	GOLIM2; GOS-28; GOS28; GS28; P28



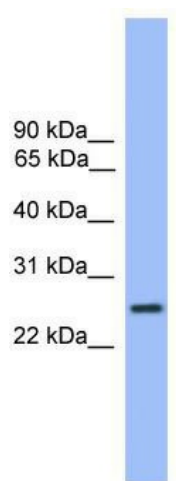
[View online »](#)

**Note:** Immunogen Sequence Homology: Dog: 100%; Pig: 100%; Rat: 100%; Horse: 100%; Human: 100%; Mouse: 100%; Bovine: 100%; Rabbit: 100%; Zebrafish: 100%; Guinea pig: 100%

**Protein Families:** Druggable Genome, Transmembrane

**Protein Pathways:** SNARE interactions in vesicular transport

**Product images:**



WB Suggested Anti-GOSR1 Antibody Titration:  
0.2-1 ug/ml; ELISA Titer: 1:312500; Positive  
Control: Human Liver