

Product datasheet for **TA342638**

Orexin (HCRT) Rabbit Polyclonal Antibody

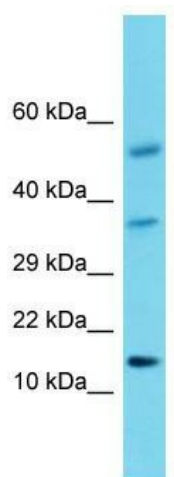
Product data:

Product Type:	Primary Antibodies
Applications:	WB
Recommended Dilution:	WB
Reactivity:	Rat
Host:	Rabbit
Isotype:	IgG
Clonality:	Polyclonal
Immunogen:	The immunogen for anti-Hcrt antibody is: synthetic peptide directed towards the middle region of Rat Hcrt. Synthetic peptide located within the following region: SCRLYELLHGAGNHAAGILTLGKRRPGPPGLQRLQRLQANGNHAAGIL
Formulation:	Liquid. Purified antibody supplied in 1x PBS buffer with 0.09% (w/v) sodium azide and 2% sucrose. <i>Note that this product is shipped as lyophilized powder to China customers.</i>
Conjugation:	Unconjugated
Storage:	Store at -20°C as received.
Stability:	Stable for 12 months from date of receipt.
Predicted Protein Size:	14 kDa
Gene Name:	hypocretin (orexin) neuropeptide precursor
Database Link:	NP_001515 Entrez Gene 25723 Rat O43612
Background:	Hcrt is a neuropeptide and is involved in feeding behavior and hormone secretion regulation.
Synonyms:	NRCLP1; OX; PPOX
Note:	Immunogen Sequence Homology: Rat: 100%; Mouse: 100%; Dog: 93%; Pig: 93%; Horse: 93%; Human: 93%; Sheep: 93%; Bovine: 93%; Rabbit: 93%; Guinea pig: 86%
Protein Families:	Druggable Genome, Transmembrane



[View online »](#)

Product images:



Host: Rabbit; Target Name: Hcrt; Sample Tissue: Rat Testis lysates; Antibody Dilution: 1.0 ug/ml