

Product datasheet for TA342636

NCKIPSD Rabbit Polyclonal Antibody

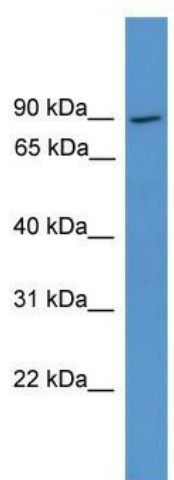
Product data:

Product Type:	Primary Antibodies
Applications:	WB
Recommended Dilution:	WB
Reactivity:	Human
Host:	Rabbit
Isotype:	IgG
Clonality:	Polyclonal
Immunogen:	The immunogen for anti-NCKIPSD antibody: synthetic peptide directed towards the middle region of human NCKIPSD. Synthetic peptide located within the following region: LVSSVLPVELARDMQTDTQDHQKLCYSALILAMVFSMGEAVPYAHYEHLG
Formulation:	Liquid. Purified antibody supplied in 1x PBS buffer with 0.09% (w/v) sodium azide and 2% sucrose.
Conjugation:	Unconjugated
Storage:	Store at -20°C as received.
Stability:	Stable for 12 months from date of receipt.
Predicted Protein Size:	79 kDa
Gene Name:	NCK interacting protein with SH3 domain
Database Link:	NP_909119 Entrez Gene 51517 Human Q9NZQ3
Background:	The protein encoded by this gene is localized exclusively in the cell nucleus. It plays a role in signal transduction, and may function in the maintenance of sarcomeres and in the assembly of myofibrils into sarcomeres. It also plays an important role in stress fiber formation. The gene is involved in therapy-related leukemia by a chromosomal translocation t(3;11)(p21;q23) that involves this gene and the myeloid/lymphoid leukemia gene. Alternative splicing occurs in this locus and two transcript variants encoding distinct isoforms have been identified.
Synonyms:	AF3P21; DIP; DIP1; ORF1; SPIN90; VIP54; WASLBP; WISH


[View online »](#)

Note: Immunogen Sequence Homology: Dog: 100%; Pig: 100%; Rat: 100%; Human: 100%; Mouse: 100%; Bovine: 100%; Guinea pig: 100%

Product images:



WB Suggested Anti-NCKIPSD Antibody; Titration: 1.0 ug/ml; Positive Control: Fetal Liver