

Product datasheet for **TA342635**

Rabphilin 3A (RPH3A) Rabbit Polyclonal Antibody

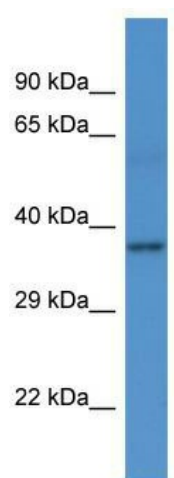
Product data:

Product Type:	Primary Antibodies
Applications:	WB
Recommended Dilution:	WB
Reactivity:	Human
Host:	Rabbit
Isotype:	IgG
Clonality:	Polyclonal
Immunogen:	The immunogen for anti-RPH3A antibody is: synthetic peptide directed towards the C-terminal region of Human RPH3A. Synthetic peptide located within the following region: VWDYDIGKSNDYIGGCQLGISAKGERLKHWECLKNKDKKIERWHQLQNE
Formulation:	Liquid. Purified antibody supplied in 1x PBS buffer with 0.09% (w/v) sodium azide and 2% sucrose. <i>Note that this product is shipped as lyophilized powder to China customers.</i>
Purification:	Affinity Purified
Conjugation:	Unconjugated
Storage:	Store at -20°C as received.
Stability:	Stable for 12 months from date of receipt.
Predicted Protein Size:	38 kDa
Gene Name:	rabphilin 3A
Database Link:	NP_001137326 Entrez Gene 22895 Human Q9Y2J0
Background:	The function of this protein remains unknown.
Synonyms:	KIAA0985
Note:	Immunogen Sequence Homology: Dog: 100%; Rat: 100%; Horse: 100%; Human: 100%; Mouse: 100%; Bovine: 100%; Rabbit: 100%; Pig: 93%; Zebrafish: 93%; Guinea pig: 93%



[View online »](#)

Product images:



Host: Rabbit; Target Name: RPH3A; Sample
Tissue: Fetal Heart lysates; Antibody Dilution: 1.0
ug/ml