

Product datasheet for **TA342633**

Rabphilin 3A (RPH3A) Rabbit Polyclonal Antibody

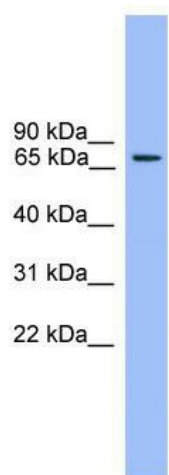
Product data:

Product Type:	Primary Antibodies
Applications:	WB
Recommended Dilution:	WB
Reactivity:	Mouse
Host:	Rabbit
Isotype:	IgG
Clonality:	Polyclonal
Immunogen:	The immunogen for anti-Rph3a antibody: synthetic peptide corresponding to a region of Mouse. Synthetic peptide located within the following region: GAWFFKGFPKQVLPQPMPIKTKPQQPAGEPATQEQPTPESRHPARAPAR
Formulation:	Liquid. Purified antibody supplied in 1x PBS buffer with 0.09% (w/v) sodium azide and 2% sucrose. <i>Note that this product is shipped as lyophilized powder to China customers.</i>
Conjugation:	Unconjugated
Storage:	Store at -20°C as received.
Stability:	Stable for 12 months from date of receipt.
Predicted Protein Size:	75 kDa
Gene Name:	rabphilin 3A
Database Link:	NP_001137326 Entrez Gene 19894 Mouse Q9Y2J0
Background:	RPH3A is a protein transport. RPH3A is probably involved with Ras-related protein Rab-3A in synaptic vesicle traffic and/or synaptic vesicle fusion. RPH3A could play a role in neurotransmitter release by regulating membrane flow in the nerve terminal.
Synonyms:	KIAA0985
Note:	Immunogen Sequence Homology: Rat: 100%; Mouse: 100%; Pig: 85%; Horse: 85%; Human: 85%; Rabbit: 85%; Guinea pig: 85%; Dog: 83%



[View online »](#)

Product images:



WB Suggested Anti-Rph3a Antibody Titration: 0.2-1 ug/ml; ELISA Titer: 1:1562500; Positive Control: Mouse Muscle