

## Product datasheet for **TA342631**

### ERC1 Rabbit Polyclonal Antibody

#### Product data:

Product Type:	Primary Antibodies
Applications:	WB
Recommended Dilution:	WB
Reactivity:	Human
Host:	Rabbit
Isotype:	IgG
Clonality:	Polyclonal
Immunogen:	The immunogen for anti-ERC1 antibody is: synthetic peptide directed towards the C-terminal region of Human ERC1. Synthetic peptide located within the following region: KKSAQMLEEARREDNLNDSSQQLQDSLRLKDDRIEELALRESVQITA
Formulation:	Liquid. Purified antibody supplied in 1x PBS buffer with 0.09% (w/v) sodium azide and 2% sucrose. <i>Note that this product is shipped as lyophilized powder to China customers.</i>
Purification:	Affinity Purified
Conjugation:	Unconjugated
Storage:	Store at -20°C as received.
Stability:	Stable for 12 months from date of receipt.
Predicted Protein Size:	79 kDa
Gene Name:	ELKS/RAB6-interacting/CAST family member 1
Database Link:	<a href="#">NP_829884</a> <a href="#">Entrez Gene 23085 Human</a> <a href="#">Q8IUD2</a>
Background:	The protein encoded by this gene is a member of a family of RIM-binding proteins. RIMs are active zone proteins that regulate neurotransmitter release. This gene has been found fused to the receptor-type tyrosine kinase gene RET by gene rearrangement due to the translocation t(10;12)(q11;p13). Multiple transcript variants encoding different isoforms have been found for this gene.
Synonyms:	Cast2; ELKS; ERC-1; RAB6IP2

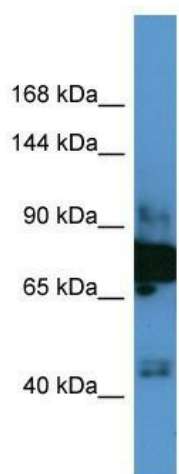


[View online »](#)

**Note:** Immunogen Sequence Homology: Dog: 100%; Pig: 100%; Rat: 100%; Horse: 100%; Human: 100%; Mouse: 100%; Bovine: 100%; Rabbit: 100%; Guinea pig: 100%; Zebrafish: 92%

**Protein Families:** Druggable Genome

**Product images:**



Host: Rabbit; Target Name: ERC1; Sample Tissue: Fetal Brain lysates; Antibody Dilution: 1.0 ug/ml