

Product datasheet for **TA342630**

ERC1 Rabbit Polyclonal Antibody

Product data:

Product Type:	Primary Antibodies
Applications:	WB
Recommended Dilution:	WB
Reactivity:	Human
Host:	Rabbit
Isotype:	IgG
Clonality:	Polyclonal
Immunogen:	The immunogen for anti-ERC1 antibody: synthetic peptide directed towards the C terminal of human ERC1. Synthetic peptide located within the following region: KLMADNYEDDHFKSSHSNQTNHKPSDQIIQPLLELDQNRSKLKLYIGHL
Formulation:	Liquid. Purified antibody supplied in 1x PBS buffer with 0.09% (w/v) sodium azide and 2% sucrose. <i>Note that this product is shipped as lyophilized powder to China customers.</i>
Conjugation:	Unconjugated
Storage:	Store at -20°C as received.
Stability:	Stable for 12 months from date of receipt.
Predicted Protein Size:	128 kDa
Gene Name:	ELKS/RAB6-interacting/CAST family member 1
Database Link:	NP_829884 Entrez Gene 23085 Human Q8IUD2
Background:	The protein encoded by this gene is a member of a family of RIM-binding proteins. RIMs are active zone proteins that regulate neurotransmitter release. This gene has been found fused to the receptor-type tyrosine kinase gene RET by gene rearrangement due to the translocation t(10;12)(q11;p13). Multiple transcript variants encoding different isoforms have been found for this gene.
Synonyms:	Cast2; ELKS; ERC-1; RAB6IP2

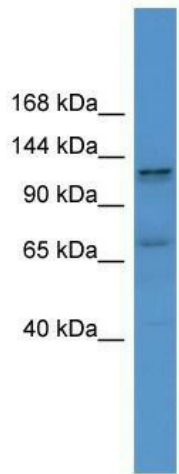


[View online »](#)

Note: Immunogen Sequence Homology: Dog: 100%; Pig: 100%; Human: 100%; Rabbit: 100%; Guinea pig: 100%; Rat: 93%; Mouse: 93%; Horse: 86%; Bovine: 86%; Zebrafish: 86%

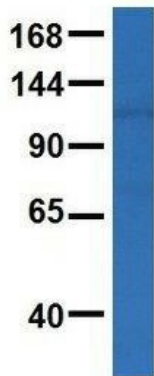
Protein Families: Druggable Genome

Product images:



WB Suggested Anti-ERC1 Antibody Titration: 0.2-1 ug/ml; ELISA Titer: 1:62500; Positive Control: Human Muscle

ERC1



Rabbit Anti-ERC1
Sample Type: Human Fetal Brain
Antibody Concentration: 1ug/mL

Host: Rabbit; Target Name: ERC1; Sample Tissue: Human Fetal Brain; Antibody Dilution: 1.0 ug/ml