

Product datasheet for **TA342626**

SYT16 Rabbit Polyclonal Antibody

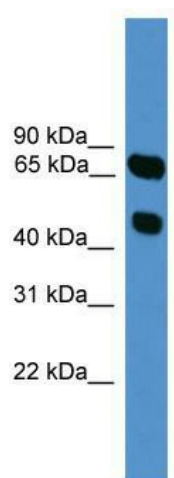
Product data:

Product Type:	Primary Antibodies
Applications:	WB
Recommended Dilution:	WB
Reactivity:	Human
Host:	Rabbit
Isotype:	IgG
Clonality:	Polyclonal
Immunogen:	The immunogen for anti-SYT16 antibody: synthetic peptide directed towards the N terminal of human SYT16. Synthetic peptide located within the following region: DKLDQDLNIIQIYFEDEEQDNDWSQEDANSLFLEVDHFSCCNSDLQD
Formulation:	Liquid. Purified antibody supplied in 1x PBS buffer with 0.09% (w/v) sodium azide and 2% sucrose. <i>Note that this product is shipped as lyophilized powder to China customers.</i>
Conjugation:	Unconjugated
Storage:	Store at -20°C as received.
Stability:	Stable for 12 months from date of receipt.
Predicted Protein Size:	72 kDa
Gene Name:	synaptotagmin 16
Database Link:	NP_114120 Entrez Gene 83851 Human Q17RD7
Background:	SYT16 may be involved in the trafficking and exocytosis of secretory vesicles in non-neuronal tissues. Is Ca ²⁺ -independent.
Synonyms:	CHR14SYT; Strep14; SYT14L; syt14r; yt14r
Note:	Immunogen Sequence Homology: Human: 100%; Rat: 93%; Horse: 93%; Rabbit: 93%; Dog: 86%



[View online »](#)

Product images:



WB Suggested Anti-SYT16 Antibody Titration: 0.2-1 ug/ml; ELISA Titer: 1:312500; Positive Control: HepG2 cell lysate