

Product datasheet for **TA342623**

SYNPR Rabbit Polyclonal Antibody

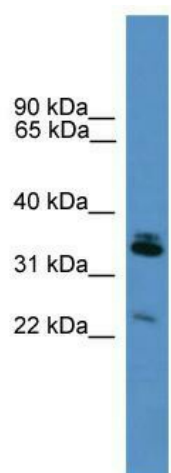
Product data:

Product Type:	Primary Antibodies
Applications:	WB
Recommended Dilution:	WB
Reactivity:	Mouse
Host:	Rabbit
Isotype:	IgG
Clonality:	Polyclonal
Immunogen:	The immunogen for anti-Synpr antibody: synthetic peptide corresponding to a region of Mouse. Synthetic peptide located within the following region: LVGDSSSSAEFFVTVAVFALYSLAATVVYIFFQNKYRENNRGPLIDFIV
Formulation:	Liquid. Purified antibody supplied in 1x PBS buffer with 0.09% (w/v) sodium azide and 2% sucrose. <i>Note that this product is shipped as lyophilized powder to China customers.</i>
Conjugation:	Unconjugated
Storage:	Store at -20°C as received.
Stability:	Stable for 12 months from date of receipt.
Predicted Protein Size:	31 kDa
Gene Name:	synaptoporin
Database Link:	NP_001123475 Entrez Gene 72003 Mouse Q8TBG9
Background:	Synpr is the intrinsic membrane protein of small synaptic vesicles. Synpr is a probable vesicular channel protein.
Synonyms:	SPO
Note:	Immunogen Sequence Homology: Dog: 100%; Pig: 100%; Rat: 100%; Horse: 100%; Human: 100%; Mouse: 100%; Bovine: 100%; Rabbit: 100%; Zebrafish: 100%; Guinea pig: 100%
Protein Families:	Secreted Protein, Transmembrane



[View online »](#)

Product images:



WB Suggested Anti-Synpr Antibody Titration: 0.2-1 ug/ml; ELISA Titer: 1:312500; Positive Control: Mouse Lung