

## Product datasheet for **TA342622**

### SCAMP3 Rabbit Polyclonal Antibody

#### Product data:

Product Type:	Primary Antibodies
Applications:	WB
Recommended Dilution:	WB
Reactivity:	Human
Host:	Rabbit
Isotype:	IgG
Clonality:	Polyclonal
Immunogen:	The immunogen for anti-SCAMP3 antibody: synthetic peptide directed towards the N terminal of human SCAMP3. Synthetic peptide located within the following region: FQPPPAYEPPAPAPLPPPSAPSLQPSRKLSPTEPKNYGSYSTQASAAAAT
Formulation:	Liquid. Purified antibody supplied in 1x PBS buffer with 0.09% (w/v) sodium azide and 2% sucrose. <i>Note that this product is shipped as lyophilized powder to China customers.</i>
Conjugation:	Unconjugated
Storage:	Store at -20°C as received.
Stability:	Stable for 12 months from date of receipt.
Predicted Protein Size:	35 kDa
Gene Name:	secretory carrier membrane protein 3
Database Link:	<a href="#">NP_443069</a> <a href="#">Entrez Gene 10067 Human</a> <a href="#">O14828</a>
Background:	This gene product belongs to the SCAMP family of proteins which are secretory carrier membrane proteins. They function as carriers to the cell surface in post-golgi recycling pathways. Different family members are highly related products of distinct genes, and are usually expressed together. These findings suggest that the SCAMPs may function at the same site during vesicular transport rather than in separate pathways. Two transcript variants encoding different isoforms have been found for this gene.
Synonyms:	C1orf3

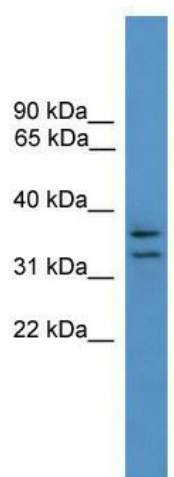


[View online »](#)

**Note:** Immunogen Sequence Homology: Dog: 100%; Pig: 100%; Rat: 100%; Human: 100%; Bovine: 100%; Rabbit: 100%; Guinea pig: 100%; Horse: 93%; Mouse: 93%; Zebrafish: 90%

**Protein Families:** Transmembrane

**Product images:**



WB Suggested Anti-SCAMP3 Antibody Titration:  
0.2-1 ug/ml; ELISA Titer: 1:62500; Positive Control:  
293T cell lysate