

Product datasheet for TA342621

SCAMP3 Rabbit Polyclonal Antibody

Product data:

| | |
|-------------------------|---|
| Product Type: | Primary Antibodies |
| Applications: | WB |
| Recommended Dilution: | WB |
| Reactivity: | Human |
| Host: | Rabbit |
| Isotype: | IgG |
| Clonality: | Polyclonal |
| Immunogen: | The immunogen for anti-SCAMP3 antibody is: synthetic peptide directed towards the N-terminal region of Human SCAMP3. Synthetic peptide located within the following region: QASAAAATAELLKKQEELNRKAEELDRRERELQHAALGGTATRQNNWPPL |
| Formulation: | Liquid. Purified antibody supplied in 1x PBS buffer with 0.09% (w/v) sodium azide and 2% sucrose. <i>Note that this product is shipped as lyophilized powder to China customers.</i> |
| Purification: | Affinity Purified |
| Conjugation: | Unconjugated |
| Storage: | Store at -20°C as received. |
| Stability: | Stable for 12 months from date of receipt. |
| Predicted Protein Size: | 38 kDa |
| Gene Name: | secretory carrier membrane protein 3 |
| Database Link: | NP_005689 Entrez Gene 10067 Human O14828 |
| Background: | This gene product belongs to the SCAMP family of proteins which are secretory carrier membrane proteins. They function as carriers to the cell surface in post-golgi recycling pathways. Different family members are highly related products of distinct genes, and are usually expressed together. These findings suggest that the SCAMPs may function at the same site during vesicular transport rather than in separate pathways. Two transcript variants encoding different isoforms have been found for this gene. |



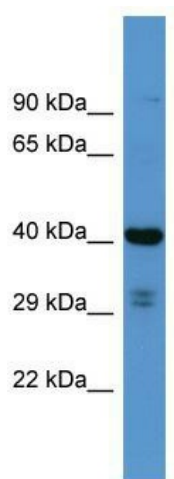
[View online »](#)

Synonyms: C1orf3

Note: Immunogen Sequence Homology: Pig: 100%; Rat: 100%; Horse: 100%; Human: 100%; Mouse: 100%; Bovine: 100%; Rabbit: 100%; Guinea pig: 100%; Dog: 93%; Zebrafish: 86%; Yeast: 85%

Protein Families: Transmembrane

Product images:



Host: Rabbit; Target Name: SCAMP3; Sample Tissue: RPMI-8226 Whole cell lysates; Antibody Dilution: 1.0 ug/ml SCAMP3 is supported by BioGPS gene expression data to be expressed in RPMI 8226