

Product datasheet for **TA342619**

Clathrin light chain (CLTA) Rabbit Polyclonal Antibody

Product data:

Product Type:	Primary Antibodies
Applications:	WB
Recommended Dilution:	WB
Reactivity:	Human
Host:	Rabbit
Isotype:	IgG
Clonality:	Polyclonal
Immunogen:	The immunogen for anti-CLTA antibody: synthetic peptide directed towards the C terminal of human CLTA. Synthetic peptide located within the following region: KELEEYARQDEQLQKTKANNRAEEAFVNDIDESSPGTEWERVERLCDF
Formulation:	Liquid. Purified antibody supplied in 1x PBS buffer with 0.09% (w/v) sodium azide and 2% sucrose. <i>Note that this product is shipped as lyophilized powder to China customers.</i>
Conjugation:	Unconjugated
Storage:	Store at -20°C as received.
Stability:	Stable for 12 months from date of receipt.
Predicted Protein Size:	24 kDa
Gene Name:	clathrin light chain A
Database Link:	NP_001824 Entrez Gene 1211 Human P09496
Background:	Clathrin is a large, soluble protein composed of heavy and light chains. It functions as the main structural component of the lattice-type cytoplasmic face of coated pits and vesicles which entrap specific macromolecules during receptor-mediated endocytosis. This gene encodes one of two clathrin light chain proteins which are believed to function as regulatory elements. Alternative splicing results in multiple transcript variants. Related pseudogenes have been identified on chromosomes 8 and 12.
Synonyms:	LCA

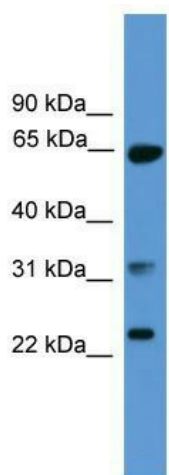


[View online »](#)

Note: Immunogen Sequence Homology: Dog: 100%; Pig: 100%; Rat: 100%; Horse: 100%; Human: 100%; Mouse: 100%; Bovine: 100%; Rabbit: 100%; Guinea pig: 100%; Zebrafish: 75%

Protein Pathways: Endocytosis, Huntington's disease, Lysosome

Product images:



WB Suggested Anti-CLTA Antibody Titration: 0.2-1 ug/ml; ELISA Titer: 1:1562500; Positive Control: Human brain