

Product datasheet for **TA342618**

CPNE6 Rabbit Polyclonal Antibody

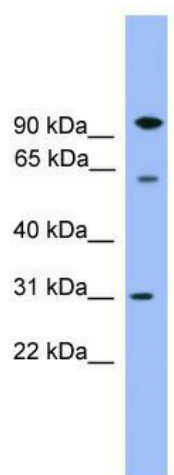
Product data:

Product Type:	Primary Antibodies
Applications:	WB
Recommended Dilution:	WB
Reactivity:	Human
Host:	Rabbit
Isotype:	IgG
Clonality:	Polyclonal
Immunogen:	The immunogen for anti-CPNE6 antibody: synthetic peptide directed towards the middle region of human CPNE6. Synthetic peptide located within the following region: LPQIQLYGPTNVAPIINRVAEPAQREQSTGQATKYSVLLVLTGVSDDMA
Formulation:	Liquid. Purified antibody supplied in 1x PBS buffer with 0.09% (w/v) sodium azide and 2% sucrose.
Conjugation:	Unconjugated
Storage:	Store at -20°C as received.
Stability:	Stable for 12 months from date of receipt.
Predicted Protein Size:	62 kDa
Gene Name:	copine 6
Database Link:	NP_006023 Entrez Gene 9362 Human O95741
Background:	This gene encodes a brain-specific member of the copine family, which is composed of calcium-dependent membrane-binding proteins. The gene product contains two N-terminal C2 domains, and one von Willebrand factor A domain. It may have a role in synaptic plasticity.
Synonyms:	N-COPINE
Note:	Immunogen Sequence Homology: Rat: 100%; Human: 100%; Mouse: 100%; Dog: 93%; Pig: 93%; Horse: 93%; Bovine: 93%; Guinea pig: 93%; Rabbit: 92%



[View online »](#)

Product images:



WB Suggested Anti-CPNE6 Antibody Titration: 0.2-1 ug/ml; ELISA Titer: 1:1562500; Positive Control: Human brain