

## Product datasheet for **TA342614**

### **PEN2 (PSENER) Rabbit Polyclonal Antibody**

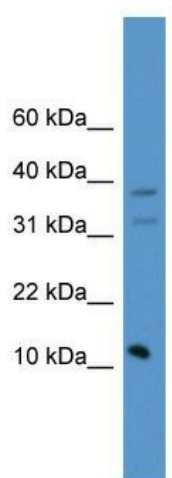
#### **Product data:**

<b>Product Type:</b>	Primary Antibodies
<b>Applications:</b>	WB
<b>Recommended Dilution:</b>	WB
<b>Reactivity:</b>	Human
<b>Host:</b>	Rabbit
<b>Isotype:</b>	IgG
<b>Clonality:</b>	Polyclonal
<b>Immunogen:</b>	The immunogen for anti-PSENER antibody: synthetic peptide directed towards the C terminal of human PSENER. Synthetic peptide located within the following region: SQIKGYWRSVAVGFLFWVIVLTSWITIFQIYRPRWGALGDYLSFTIPLGT
<b>Formulation:</b>	Liquid. Purified antibody supplied in 1x PBS buffer with 0.09% (w/v) sodium azide and 2% sucrose. <i>Note that this product is shipped as lyophilized powder to China customers.</i>
<b>Conjugation:</b>	Unconjugated
<b>Storage:</b>	Store at -20°C as received.
<b>Stability:</b>	Stable for 12 months from date of receipt.
<b>Predicted Protein Size:</b>	12 kDa
<b>Gene Name:</b>	presenilin enhancer gamma-secretase subunit
<b>Database Link:</b>	<a href="#">NP_758844</a> <a href="#">Entrez Gene 55851 Human</a> <a href="#">Q9NZ42</a>
<b>Background:</b>	Presenilins, which are components of the gamma-secretase protein complex, are required for intramembranous processing of some type I transmembrane proteins, such as the Notch proteins and the beta-amyloid precursor protein. Signaling by Notch receptors mediates a wide range of developmental cell fates. Processing of the beta-amyloid precursor protein generates neurotoxic amyloid beta peptides, the major component of senile plaques associated with Alzheimer's disease. This gene encodes a protein that is required for Notch pathway signaling, and for the activity and accumulation of gamma-secretase.



[View online »](#)

<b>Synonyms:</b>	MDS033; MSTP064; PEN-2; PEN2
<b>Note:</b>	Immunogen Sequence Homology: Dog: 100%; Pig: 100%; Rat: 100%; Horse: 100%; Human: 100%; Mouse: 100%; Bovine: 100%; Rabbit: 100%; Zebrafish: 100%; Guinea pig: 100%
<b>Protein Families:</b>	Druggable Genome, Transmembrane
<b>Protein Pathways:</b>	Alzheimer's disease, Notch signaling pathway

**Product images:**

WB Suggested Anti-PSENEN Antibody Titration:  
0.2-1 ug/ml; ELISA Titer: 1:1562500; Positive  
Control: Human Muscle