

## Product datasheet for **TA342613**

### Contactin 1 (CNTN1) Rabbit Polyclonal Antibody

#### Product data:

Product Type:	Primary Antibodies
Applications:	WB
Recommended Dilution:	WB
Reactivity:	Human
Host:	Rabbit
Isotype:	IgG
Clonality:	Polyclonal
Immunogen:	The immunogen for anti-CNTN1 antibody: synthetic peptide directed towards the N terminal of human CNTN1. Synthetic peptide located within the following region: NGDVDLTSDRYSMVGGNLVINNPDKQKDAGIYYCLASNNYGMVRSTEATL
Formulation:	Liquid. Purified antibody supplied in 1x PBS buffer with 0.09% (w/v) sodium azide and 2% sucrose. <i>Note that this product is shipped as lyophilized powder to China customers.</i>
Conjugation:	Unconjugated
Storage:	Store at -20°C as received.
Stability:	Stable for 12 months from date of receipt.
Predicted Protein Size:	111 kDa
Gene Name:	contactin 1
Database Link:	<a href="#">NP_001834</a> <a href="#">Entrez Gene 1272 Human Q12860</a>
Background:	The protein encoded by this gene is a member of the immunoglobulin superfamily. It is a glycosylphosphatidylinositol (GPI)-anchored neuronal membrane protein that functions as a cell adhesion molecule. It may play a role in the formation of axon connections in the developing nervous system. Two alternatively spliced transcript variants encoding different isoforms have been described for this gene.
Synonyms:	F3; GP135; MYPCN

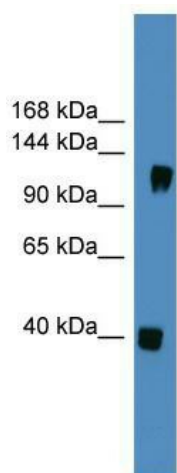


[View online »](#)

**Note:** Immunogen Sequence Homology: Dog: 100%; Pig: 100%; Rat: 100%; Horse: 100%; Human: 100%; Bovine: 100%; Guinea pig: 100%; Mouse: 93%; Rabbit: 93%

**Protein Pathways:** Cell adhesion molecules (CAMs)

**Product images:**



WB Suggested Anti-CNTN1 Antibody Titration:  
0.2-1 ug/ml; ELISA Titer: 1:1562500; Positive  
Control: Human brain