

Product datasheet for **TA342611**

UFD1 Rabbit Polyclonal Antibody

Product data:

| | |
|-------------------------|--|
| Product Type: | Primary Antibodies |
| Applications: | WB |
| Recommended Dilution: | WB |
| Reactivity: | Human |
| Host: | Rabbit |
| Isotype: | IgG |
| Clonality: | Polyclonal |
| Immunogen: | The immunogen for anti-UFD1L antibody: synthetic peptide directed towards the middle region of human UFD1L. Synthetic peptide located within the following region: NYNEKIYELRVMETKPKDAVSIIECDMNVDFDAPLGYPEPERQVQHEEST |
| Formulation: | Liquid. Purified antibody supplied in 1x PBS buffer with 0.09% (w/v) sodium azide and 2% sucrose. <i>Note that this product is shipped as lyophilized powder to China customers.</i> |
| Conjugation: | Unconjugated |
| Storage: | Store at -20°C as received. |
| Stability: | Stable for 12 months from date of receipt. |
| Predicted Protein Size: | 34 kDa |
| Gene Name: | ubiquitin fusion degradation 1 like (yeast) |
| Database Link: | NP_005650 Entrez Gene 7353 Human Q92890 |
| Background: | The protein encoded by this gene forms a complex with two other proteins, nuclear protein localization-4 and valosin-containing protein, and this complex is necessary for the degradation of ubiquitinated proteins. In addition, this complex controls the disassembly of the mitotic spindle and the formation of a closed nuclear envelope after mitosis. Mutations in this gene have been associated with Catch 22 syndrome as well as cardiac and craniofacial defects. Alternative splicing results in multiple transcript variants encoding different isoforms. A related pseudogene has been identified on chromosome 18. |

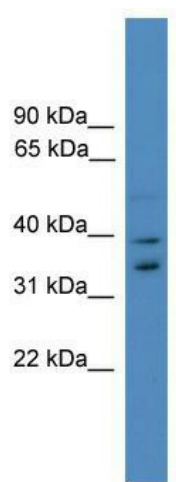


[View online »](#)

Synonyms: UFD1

Note: Immunogen Sequence Homology: Dog: 100%; Pig: 100%; Rat: 100%; Horse: 100%; Human: 100%; Guinea pig: 100%; Mouse: 93%; Bovine: 93%; Rabbit: 93%; Zebrafish: 79%

Product images:



WB Suggested Anti-UFD1L Antibody Titration: 0.2-1 ug/ml; ELISA Titer: 1:1562500; Positive Control: MCF7 cell lysate UFD1L is supported by BioGPS gene expression data to be expressed in MCF7