

Product datasheet for **TA342609**

RPS27A Rabbit Polyclonal Antibody

Product data:

Product Type:	Primary Antibodies
Applications:	WB
Recommended Dilution:	WB
Reactivity:	Human, Mouse
Host:	Rabbit
Isotype:	IgG
Clonality:	Polyclonal
Immunogen:	The immunogen for anti-RPS27A antibody: synthetic peptide directed towards the middle region of human RPS27A. Synthetic peptide located within the following region: LRGGAKKRKKKSYTTPKKNKHKRKKVLAFLKYYKVDENGKISRLRRECP
Formulation:	Liquid. Purified antibody supplied in 1x PBS buffer with 0.09% (w/v) sodium azide and 2% sucrose. <i>Note that this product is shipped as lyophilized powder to China customers.</i>
Conjugation:	Unconjugated
Storage:	Store at -20°C as received.
Stability:	Stable for 12 months from date of receipt.
Predicted Protein Size:	9 kDa
Gene Name:	ribosomal protein S27a
Database Link:	NP_002945 Entrez Gene 78294 Mouse Entrez Gene 6233 Human P62979



[View online »](#)

Background:

Ubiquitin, a highly conserved protein that has a major role in targeting cellular proteins for degradation by the 26S proteasome, is synthesized as a precursor protein consisting of either polyubiquitin chains or a single ubiquitin fused to an unrelated protein. This gene encodes a fusion protein consisting of ubiquitin at the N terminus and ribosomal protein S27a at the C terminus. When expressed in yeast, the protein is post-translationally processed, generating free ubiquitin monomer and ribosomal protein S27a. Ribosomal protein S27a is a component of the 40S subunit of the ribosome and belongs to the S27AE family of ribosomal proteins. It contains C4-type zinc finger domains and is located in the cytoplasm. Pseudogenes derived from this gene are present in the genome. As with ribosomal protein S27a, ribosomal protein L40 is also synthesized as a fusion protein with ubiquitin; similarly, ribosomal protein S30 is synthesized as a fusion protein with the ubiquitin-like protein fubi. Multiple alternatively spliced transcript variants that encode the same proteins have been identified.

Synonyms:

CEP80; HEL112; S27A; UBA80; UBC; UBCEP1; UBCEP80

Note:

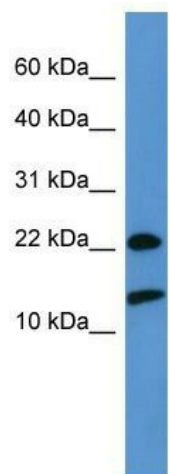
Immunogen Sequence Homology: Dog: 100%; Pig: 100%; Rat: 100%; Horse: 100%; Human: 100%; Mouse: 100%; Sheep: 100%; Bovine: 100%; Rabbit: 100%; Guinea pig: 100%; Zebrafish: 93%; Yeast: 79%

Protein Families:

Druggable Genome

Protein Pathways:

Ribosome

Product images:

WB Suggested Anti-RPS27A Antibody Titration:
0.2-1 ug/ml; ELISA Titer: 1:1562500; Positive
Control: 293T cell lysate RPS27A is supported by
BioGPS gene expression data to be expressed in
HEK293T