

## Product datasheet for **TA342608**

### CENPU Rabbit Polyclonal Antibody

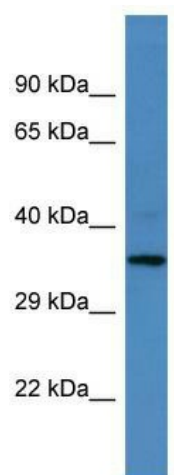
#### Product data:

Product Type:	Primary Antibodies
Applications:	WB
Recommended Dilution:	WB
Reactivity:	Human
Host:	Rabbit
Isotype:	IgG
Clonality:	Polyclonal
Immunogen:	The immunogen for anti-MLF1IP antibody is: synthetic peptide directed towards the N-terminal region of Human MLF1IP. Synthetic peptide located within the following region: YADEEEFSKHCGLSLSSTPPGKEAKRSSDTSGNEASEIESVKISAKKPG
Formulation:	Liquid. Purified antibody supplied in 1x PBS buffer with 0.09% (w/v) sodium azide and 2% sucrose. <i>Note that this product is shipped as lyophilized powder to China customers.</i>
Purification:	Affinity Purified
Conjugation:	Unconjugated
Storage:	Store at -20°C as received.
Stability:	Stable for 12 months from date of receipt.
Predicted Protein Size:	35 kDa
Gene Name:	centromere protein U
Database Link:	<a href="#">NP_078905</a> <a href="#">Entrez Gene 79682 Human Q71F23</a>
Background:	The function of this protein remains unknown.
Synonyms:	CENP50; CENPU50; KLIP1; MLF1IP; PBIP1
Note:	Immunogen Sequence Homology: Human: 100%; Bovine: 86%; Pig: 79%; Horse: 79%
Protein Families:	Druggable Genome



[View online »](#)

## Product images:



Host: Rabbit; Target Name: MLF1IP; Sample  
Tissue: Placenta lysates; Antibody Dilution: 1.0  
ug/ml