

Product datasheet for **TA342606**

FBXL12 Rabbit Polyclonal Antibody

Product data:

Product Type:	Primary Antibodies
Applications:	WB
Recommended Dilution:	WB
Reactivity:	Human
Host:	Rabbit
Isotype:	IgG
Clonality:	Polyclonal
Immunogen:	The immunogen for anti-FBXL12 antibody: synthetic peptide directed towards the C terminal of human FBXL12. Synthetic peptide located within the following region: PTEILSSCLTMPKLRVLELQGLGWEGQEA EKILCKGLPHCMVIVRACPKE
Formulation:	Liquid. Purified antibody supplied in 1x PBS buffer with 0.09% (w/v) sodium azide and 2% sucrose. <i>Note that this product is shipped as lyophilized powder to China customers.</i>
Conjugation:	Unconjugated
Storage:	Store at -20°C as received.
Stability:	Stable for 12 months from date of receipt.
Predicted Protein Size:	37 kDa
Gene Name:	F-box and leucine-rich repeat protein 12
Database Link:	NP_060173 Entrez Gene 54850 Human Q9NXX8
Background:	Members of the F-box protein family, such as FBXL12, are characterized by an approximately 40-amino acid F-box motif. SCF complexes, formed by SKP1 (MIM 601434), cullin (see CUL1; MIM 603134), and F-box proteins, act as protein-ubiquitin ligases. F-box proteins interact with SKP1 through the F box, and they interact with ubiquitination targets through other protein interaction domains (Jin et al., 2004 [PubMed 15520277]).
Synonyms:	Fbl12

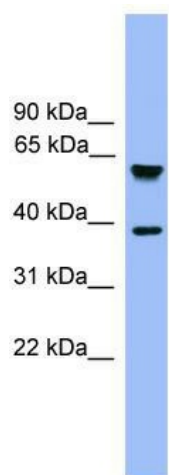


[View online »](#)

Note: Immunogen Sequence Homology: Pig: 100%; Human: 100%; Mouse: 100%; Dog: 93%; Rat: 93%; Horse: 93%; Bovine: 93%; Rabbit: 86%; Guinea pig: 86%

Protein Families: Druggable Genome

Product images:



WB Suggested Anti-FBXL12 Antibody Titration:
0.2-1 ug/ml; ELISA Titer: 1:1562500; Positive
Control: Human heart