

## Product datasheet for **TA342605**

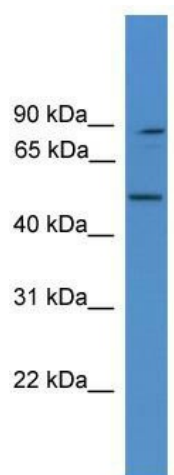
### ZYG11BL (ZER1) Rabbit Polyclonal Antibody

#### Product data:

Product Type:	Primary Antibodies
Applications:	WB
Recommended Dilution:	WB
Reactivity:	Human
Host:	Rabbit
Isotype:	IgG
Clonality:	Polyclonal
Immunogen:	The immunogen for anti-ZER1 antibody: synthetic peptide directed towards the middle region of human ZER1. Synthetic peptide located within the following region: LTNSEYRSEQSVKLRQVIQWLNMGESYQEVTVQRNCCLTLCNFSIPEE
Formulation:	Liquid. Purified antibody supplied in 1x PBS buffer with 0.09% (w/v) sodium azide and 2% sucrose. <i>Note that this product is shipped as lyophilized powder to China customers.</i>
Conjugation:	Unconjugated
Storage:	Store at -20°C as received.
Stability:	Stable for 12 months from date of receipt.
Predicted Protein Size:	88 kDa
Gene Name:	zyg-11 related cell cycle regulator
Database Link:	<a href="#">NP_006327</a> <a href="#">Entrez Gene 10444 Human Q7Z7L7</a>
Background:	ZER1 probably acts as target recruitment subunit in the E3 ubiquitin ligase complex ZER1-CUL2-Elongin BC.
Synonyms:	C9orf60; ZYG; ZYG11BL
Note:	Immunogen Sequence Homology: Pig: 100%; Rat: 100%; Horse: 100%; Human: 100%; Mouse: 100%; Dog: 93%; Bovine: 93%; Guinea pig: 93%; Rabbit: 86%; Zebrafish: 79%



[View online »](#)

**Product images:**

WB Suggested Anti-ZER1 Antibody; Titration: 1.0 ug/ml; Positive Control: RPMI-8226 Whole Cell. ZER1 is strongly supported by BioGPS gene expression data to be expressed in RPMI-8226