

Product datasheet for **TA342604**

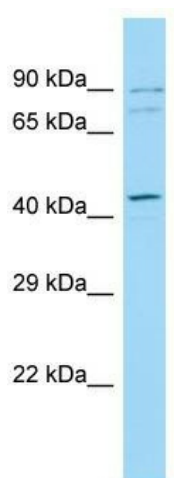
ZYG11BL (ZER1) Rabbit Polyclonal Antibody

Product data:

Product Type:	Primary Antibodies
Applications:	WB
Recommended Dilution:	WB
Reactivity:	Human
Host:	Rabbit
Isotype:	IgG
Clonality:	Polyclonal
Immunogen:	The immunogen for anti-ZER1 antibody is: synthetic peptide directed towards the C-terminal region of Human ZER1. Synthetic peptide located within the following region: YCPLLIKEGGMPLLRDIIKMATARQETKEMARKVIEHCSNFKEENMDTSR
Formulation:	Liquid. Purified antibody supplied in 1x PBS buffer with 0.09% (w/v) sodium azide and 2% sucrose.
Conjugation:	Unconjugated
Storage:	Store at -20°C as received.
Stability:	Stable for 12 months from date of receipt.
Predicted Protein Size:	88 kDa
Gene Name:	zyg-11 related cell cycle regulator
Database Link:	NP_006327 Entrez Gene 10444 Human Q7Z7L7
Background:	ZER1 probably acts as target recruitment subunit in the E3 ubiquitin ligase complex ZER1-CUL2-Elongin BC.
Synonyms:	C9orf60; ZYG; ZYG11BL
Note:	Immunogen Sequence Homology: Dog: 100%; Pig: 100%; Rat: 100%; Horse: 100%; Human: 100%; Bovine: 100%; Guinea pig: 100%; Mouse: 93%; Rabbit: 86%



[View online »](#)

Product images:

Host: Rabbit; Target Name: ZER1; Sample Tissue: Fetal Kidney lysates; Antibody Dilution: 1.0 ug/ml