

## Product datasheet for **TA342603**

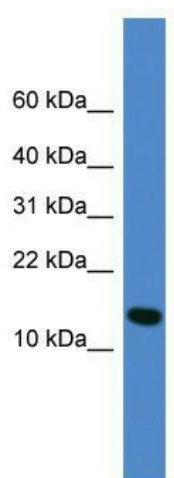
### UFM1 Rabbit Polyclonal Antibody

#### Product data:

Product Type:	Primary Antibodies
Applications:	WB
Recommended Dilution:	WB
Reactivity:	Human
Host:	Rabbit
Isotype:	IgG
Clonality:	Polyclonal
Immunogen:	The immunogen for anti-UFM1 antibody: synthetic peptide directed towards the middle region of human UFM1. Synthetic peptide located within the following region: LSVPESTPFTAVLKFAAEFKVPAATSAITNDGIGINPAQTAGNVFLKH
Formulation:	Liquid. Purified antibody supplied in 1x PBS buffer with 0.09% (w/v) sodium azide and 2% sucrose. <i>Note that this product is shipped as lyophilized powder to China customers.</i>
Conjugation:	Unconjugated
Storage:	Store at -20°C as received.
Stability:	Stable for 12 months from date of receipt.
Predicted Protein Size:	9 kDa
Gene Name:	ubiquitin-fold modifier 1
Database Link:	<a href="#">NP_057701</a> <a href="#">Entrez Gene 51569 Human P61960</a>
Background:	UFM1 is a ubiquitin-like protein that is conjugated to target proteins by E1-like activating enzyme UBA5 (UBE1DC1; MIM 610552) and E2-like conjugating enzyme UFC1 (MIM 610554) in a manner analogous to ubiquitylation (see UBE2M; MIM 603173) (Komatsu et al., 2004 [PubMed 15071506]).
Synonyms:	BM-002; C13orf20
Note:	Immunogen Sequence Homology: Dog: 100%; Pig: 100%; Rat: 100%; Horse: 100%; Human: 100%; Mouse: 100%; Bovine: 100%; Rabbit: 100%; Zebrafish: 100%



[View online »](#)

**Product images:**

WB Suggested Anti-UFM1 Antibody Titration: 0.2-1 ug/ml; ELISA Titer: 1:312500; Positive Control: Human Lung