

Product datasheet for **TA342602**

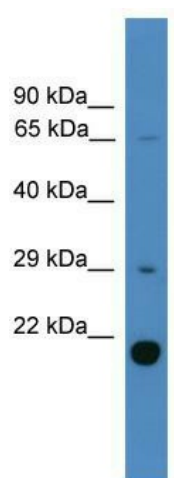
UBTD2 Rabbit Polyclonal Antibody

Product data:

Product Type:	Primary Antibodies
Applications:	WB
Recommended Dilution:	WB
Reactivity:	Human
Host:	Rabbit
Isotype:	IgG
Clonality:	Polyclonal
Immunogen:	The immunogen for anti-UBTD2 antibody: synthetic peptide directed towards the C terminal of human UBTD2. Synthetic peptide located within the following region: TDTVFHMKRRLHAAEGVEPGSQRWFFSGRPLTDKMKFEELKIPKDYVVQV
Formulation:	Liquid. Purified antibody supplied in 1x PBS buffer with 0.09% (w/v) sodium azide and 2% sucrose.
Conjugation:	Unconjugated
Storage:	Store at -20°C as received.
Stability:	Stable for 12 months from date of receipt.
Predicted Protein Size:	26 kDa
Gene Name:	ubiquitin domain containing 2
Database Link:	NP_689490 Entrez Gene 92181 Human Q8WUN7
Background:	The function of UBTD2 remains unknown.
Synonyms:	DCUBP
Note:	Immunogen Sequence Homology: Human: 100%; Dog: 93%; Pig: 93%; Rat: 93%; Horse: 93%; Mouse: 93%; Rabbit: 93%; Guinea pig: 93%; Bovine: 86%; Zebrafish: 79%
Protein Families:	Druggable Genome



[View online »](#)

Product images:


WB Suggested Anti-UBTD2 Antibody Titration:
0.2-1 ug/ml; ELISA Titer: 1:312500; Positive
Control: Human Liver